



SSR-XFE/EPE/HPE 50 HP
SSR-XF/EP/HP 60 HP
SSR-XF/EP/HP/XP 75-100 HP
SSR-ML/MM/MH 37-75 KW

PARTS LIST
RECOMMENDED SPARES



RETAIN THIS MANUAL WITH UNIT.

This manual contains important safety information and must be made available to personnel who operate and maintain this machine.

C.C.N. : 80440456
REV. : B
DATE : July 2007

WARRANTY

AIR COMPRESSOR GROUP BONDED WARRANTY & REGISTERED START UP

Warranty

The Company warrants that the equipment manufactured by it and delivered hereunder will be free of defects in material and workmanship for a period of twelve months from the date of placing the Equipment in operation or eighteen months from the date of shipment from Davidson, NC, whichever shall first occur. The Purchaser shall be obligated to promptly report any failure to conform to this warranty, in writing to the Company in said period, whereupon the Company shall, at its option, correct such nonconformity, by suitable repair to such equipment or, furnish a replacement part F.O.B. point of shipment, provided the Purchaser has stored, installed maintained and operated such Equipment in accordance with good industry practices and has complied with specific recommendations of the Company. Accessories or equipment furnished by the Company, but manufactured by others, shall carry whatever warranty the manufacturers have conveyed to the Company and which can be passed on to the Purchaser. The Company shall not be liable for any repairs, replacements, or adjustments to the Equipment or any costs of labor performed by the Purchaser or others without Company's prior written approval. The effects of corrosion, erosion and normal wear and tear are specifically excluded. Performance warranties are limited to those specifically stated within the Company's proposal. Unless responsibility for meeting such performance warranties are limited to specified tests, the Company's obligation shall be to correct in the manner and for the period of time provided above.

THE COMPANY MAKES NO OTHER WARRANTY OR REPRESENTATION OF ANY KIND WHATSOEVER, EXPRESSED OR IMPLIED, EXCEPT THAT OF TITLE, AND ALL IMPLIED WARRANTIES OF MERCHANTABILITY AND FITNESS FOR A PARTICULAR PURPOSE, ARE HEREBY DISCLAIMED.

Correction by the Company of nonconformities whether patent or latent, in the manner and for the period of time provided above, shall constitute fulfillment of all liabilities of the Company for such nonconformities whether based on contract, warranty negligence, indemnity, strict liability or otherwise with respect to or arising out of such Equipment.

The purchaser shall not operate Equipment which is considered to be defective, without first notifying the Company in writing of its intention to do so. Any such Equipment will be at Purchaser's sole risk and liability.

Limitation of Liability

The remedies of the Purchaser set forth herein are exclusive, and the total liability of the Company with respect to this contract or the Equipment and services furnished hereunder, in connection with the performance or breach thereof, or from the manufacture, sale, delivery, installation, repair or technical direction covered by or furnished under this contract, whether passed on contract, warranty negligence, indemnity, strict liability or otherwise, shall not exceed the purchase price of the unit of Equipment upon which such liability is based.

The Company and its suppliers shall in no event be liable to the Purchaser, any successors in interest or any beneficiary or assignee of this contract for any consequential, incidental, indirect, special or punitive damages arising out of this contract or any breach thereof, or any defect in, or failure of, or malfunction of the Equipment hereunder, whether based upon loss of use, lost profits or revenue, interest, lost goodwill, work stoppage, impairment of other goods, loss by reason of shutdown or non-operation, increased expenses of operation, cost of purchase of replacement power or claims of Purchaser or customers of Purchaser for service interruption whether or not such loss or damage is based on contract, warranty, negligence, indemnity, strict liability or otherwise.

- 1 CONTENTS
- 2 SAFETY & WARNINGS
- 3 INTRODUCTION
- 4 CONTROLLER ASSEMBLY
- 5 CONTROL PIPING (NEMA 1) - NO MODULATION
- 6 CONTROL PIPING (NEMA 1) - WITH MODULATION
- 7 CONTROL PIPING (NEMA 4) - NO MODULATION
- 8 CONTROL PIPING (NEMA 4) - WITH MODULATION
- 9 ELECTRICAL COMPONENTS - ALL UNITS
- 10 STARTER - FULL VOLTAGE (C85)
- 11 STARTER - FULL VOLTAGE (D180 & D250)
- 12 STARTER - STAR-DELTA (C43 W/C37) & (C60 W/C43)
- 13 STARTER - STAR-DELTA (C72 W/C60) & (C85 W/C60)
- 14 STARTER - STAR-DELTA (D180 W/D180)
- 15 STARTER - STAR-DELTA (D250 W/D180)
- 16 50-60 HP MOTOR & GEAR
- 17 37-45 KW MOTOR & GEAR
- 18 50-60 HP & 37-45 KW MOTOR SUPPORT
- 19 75 HP MOTOR & GEAR W/MOTOR SUPPORT
- 20 55 KW MOTOR & GEAR W/MOTOR SUPPORT
- 21 100 HP MOTOR & GEAR W/MOTOR SUPPORT
- 22 75 KW MOTOR & GEAR W/MOTOR SUPPORT
- 23 50-60 HP (37-45 KW) AIREND PIPING AND SUPPORT
- 24 75-100 HP (55-75 KW) AIREND PIPING AND SUPPORT
- 25 INLET VALVE ASSEMBLY
- 26 50-60 HP (37-45 KW) AIR FILTER ASSEMBLY
- 27 75-100 HP (55-75 KW) AIR FILTER ASSEMBLY
- 28 50-60 HP (37-45 KW) SEPARATOR TANK
- 29 75-100 HP (55-75 KW) SEPARATOR TANK
- 31 TEMPERATURE CONTROL VALVE AND PIPING
- 32 COOLER FRAME
- 33 AIR COOLED COOLER
- 35 50-75 HP (37-55 KW) MOISTURE SEPARATOR
- 36 100 HP (75 KW) MOISTURE SEPARATOR
- 37 WATER COOLED (COMMON)
- 38 50-60 HP (37-45 KW) WATER COOLED
- 39 75-100 HP (55-75 KW) WATER COOLED
- 40 ENCLOSURE ASSEMBLY
- 42 INTAKE ASSEMBLY
- 43 RECOMMENDED SPARES PARTS LIST

This unit was purchased from:

Ingersoll Rand Company reserves the right to make changes or add improvements without notice and without incurring any obligation to make such changes or add such improvements to products sold previously.
 Model:
 No:
 Customer Order No:
Ingersoll Rand Co. Order No:

For ready reference:
 Record the serial number and model number of your unit here.
 Serial Number:

0.1 SAFETY INSTRUCTIONS

Before you install this air compressor you should take the time to carefully read all the instructions contained in this operators manual APDD 696. Operator manuals may be obtained from your local Ingersoll Rand Distributor or Air Center.

Electricity and compressed air have the potential to cause severe personal injury or property damage.

Before installing, wiring, starting, operating or making any adjustments, identify the components of the air compressor using this manual as a guide.

The operator should use common sense and good working practices while operating and maintaining this unit. Follow all codes, pipe adequately, understand the starting and stopping sequence. Check the safety devices by following the procedure contained in this manual.

Maintenance should be done by qualified personnel, adequately equipped with proper tools. Follow the maintenance schedules as outlined in the operators manual to ensure problem free operation after start up.

0.2 SAFETY PRECAUTIONS

Safety instructions in the operators manual are bold-faced for emphasis. The signal words DANGER, WARNING and CAUTION are used to indicate hazard seriousness levels as follows:



Danger is used to indicate the presence of a hazard which will cause severe personal injury, death, or substantial property damage if the warning is ignored.



Warning is used to indicate the presence of a hazard which can cause severe personal injury, death, or substantial property damage if the warning is ignored.



Caution is used to indicate the presence of a hazard which will or can cause minor personal injury or property damage if the warning is ignored.



Notice is used to notify people of installation, operation, or maintenance information which is important but not hazard-related.

SAFETY PRECAUTIONS***BEFORE PROCEEDING, READ CAREFULLY BEFORE INSTALLING THE COMPRESSOR OR PERFORMING ANY MAINTENANCE*****WARNING****COMPRESSED AIR AND ELECTRICITY ARE DANGEROUS.****BEFORE DOING ANY WORK ON THIS UNIT, BE SURE THE ELECTRICAL SUPPLY HAS BEEN CUT OFF-LOCKED & TAGGED AND THE ENTIRE COMPRESSOR SYSTEM HAS BEEN VENTED OF ALL PRESSURE.**

1. Do not remove the covers, loosen or remove any fittings, connections or devices when this unit is in operation. Hot liquid and air under pressure that are contained within this unit can cause severe injury or death.
2. The compressor has high and dangerous voltage in the motor starter and control box. All installations must be in accordance with recognized electrical codes. Before working on the electrical system, be sure to remove voltage from the system by use of a manual-disconnect-switch. A circuit breaker or fuse safety switch must be provided in the electrical supply line leading to the compressor.

Those responsible for installation of this equipment must provide suitable grounds, maintenance clearance and lightning arrestors for all electrical components as stipulated in O.S.H.A. 1910.308 through 1910.329.

3. Do not operate the compressor at higher discharge pressure than those specified on the Compressor Nameplate or motor overload will occur. This condition will result in compressor motor shutdown.
4. Use only safety solvent for cleaning the compressor and auxiliary equipment.
5. Install a manual shut off valve (isolation type) in the discharge line. When a safety valve is installed between the isolation valve and the compressor, it must have sufficient capacity to relieve the full capacity of the compressor(s)
6. Whenever pressure is released through the pressure relief valve, it is due to excessive pressure in the system. The cause for the excessive pressure should be investigated immediately.
7. Before doing any mechanical work on the compressor:
 - a.) Shut the unit down.
 - b.) Electrically isolate the compressor by use of the manual disconnect switch in the power line to the unit. Lock and tag the switch so that it cannot be operated
 - c.) Vent pressure from the compressor and isolate the unit from any other source of air.

8. There can be adverse effects if compressor lubricants are allowed to enter plant air systems.

Air line separators, properly selected and installed, will minimize any liquid carry-over.

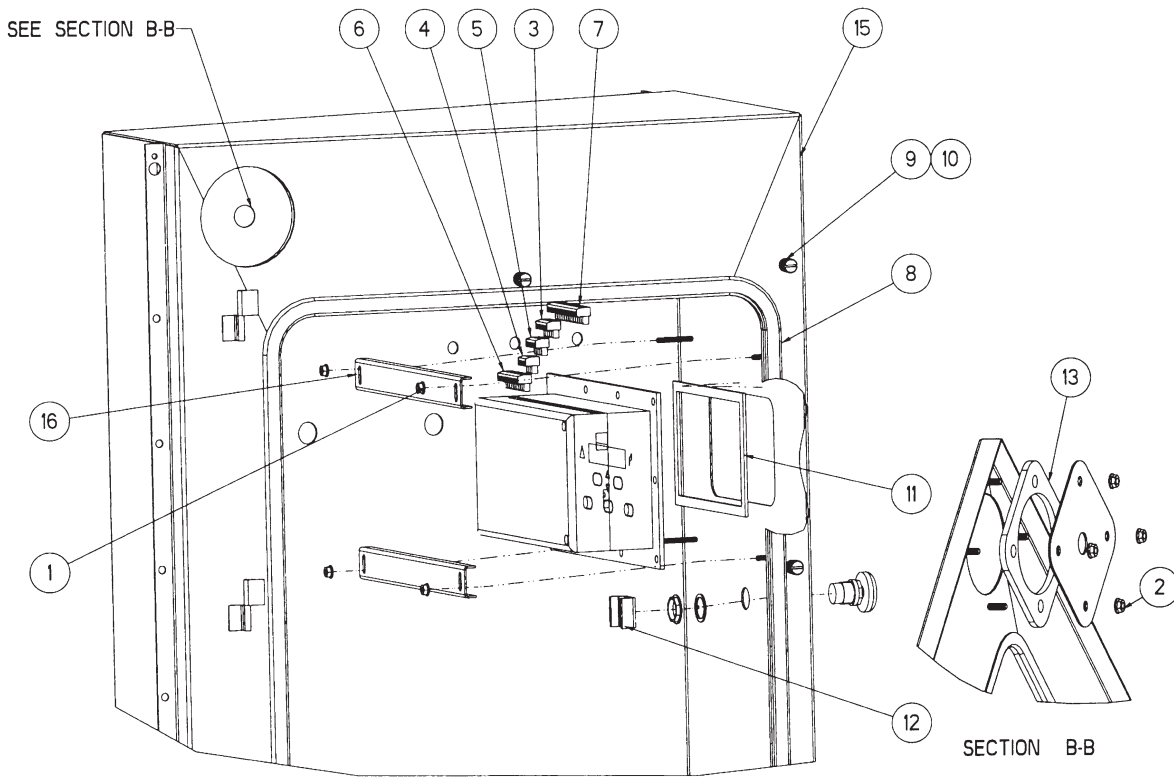
The use of plastic bowls on line filters without metal guards can be hazardous. From a safety standpoint, metal bowls should be used on any pressurized system. Review of your plant air line system is recommended.

9. When a receiver is installed, it is recommended that occupational safety and health standards as covered in the Federal Register, Volume 36, number 105, part 11, paragraph 1910.169 be adhered to in the installation and maintenance of this receiver.

10. Before starting the compressor, its maintenance instructions should be thoroughly read and understood.

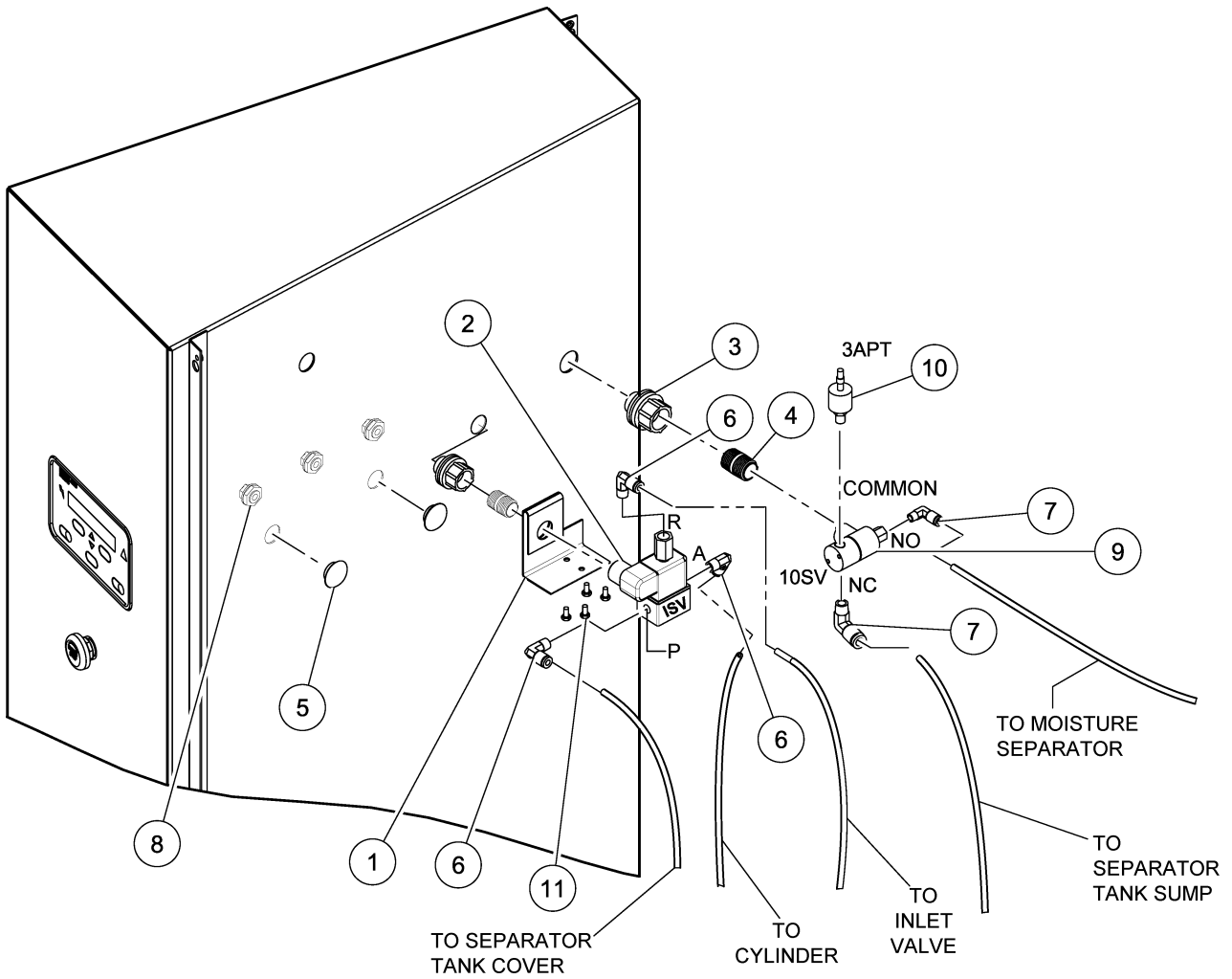
11. After maintenance functions are completed, covers and guards must be replaced.

4 CONTROLLER ASSEMBLY

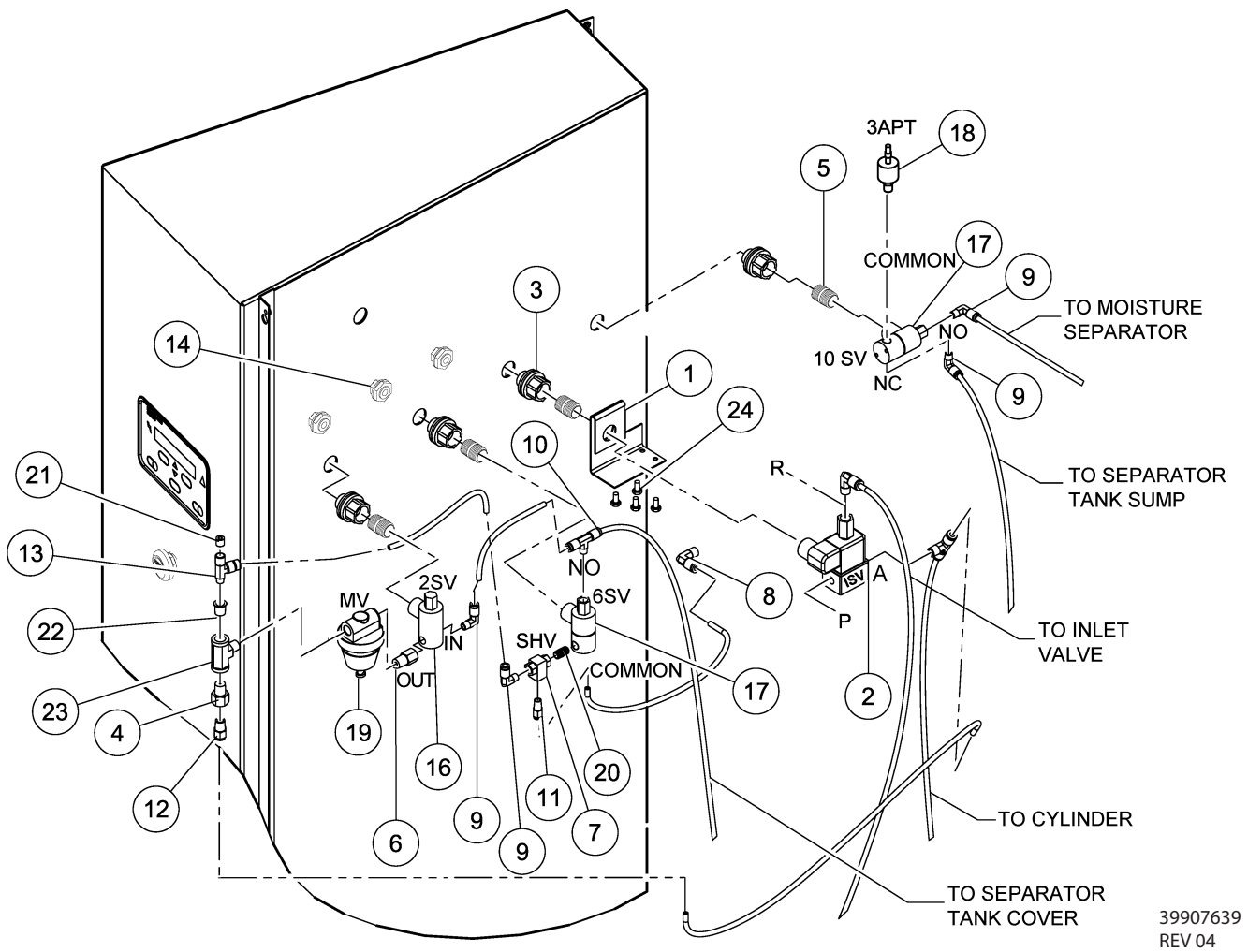


39908439
REV 02

Item	CCN	Qty	Description	Item	CCN	Qty	Description
1	39128533	4	NUT, WHIZ LOCK .10 ZINC PLATED	9	39256318	7	SCREW, KNURL HEAD .25 X 100 LONG
2	39128541	4	NUT, WHIZ LOCK .25 ZINC PLATED	10	39256326	7	RETAINER, BOLT .25
3	39186093	1	PLUG, 6 POSITION	11	39495874	1	GASKET, INTELLISYS STARTER BOX
4	39186101	1	PLUG, 4 POSITION	12	39549167	1	SWITCH, EMERGENCY STOP
5	39191630	1	PLUG, 5 POSITION	13	39589007	1	GASKET, CONDUIT PLATE
6	3919648	1	PLUG, 11 POSITION	14	39817655	1	CONTROLLER/INTELLISYS
7	39191655	1	PLUG, 16 POSITION	15	39894621	1	BOX, STARTER
8	39249875	1	GASKET, SEALING EDGE 130 IN. LONG	16	39896634	2	ANGLE, CONTROLLER

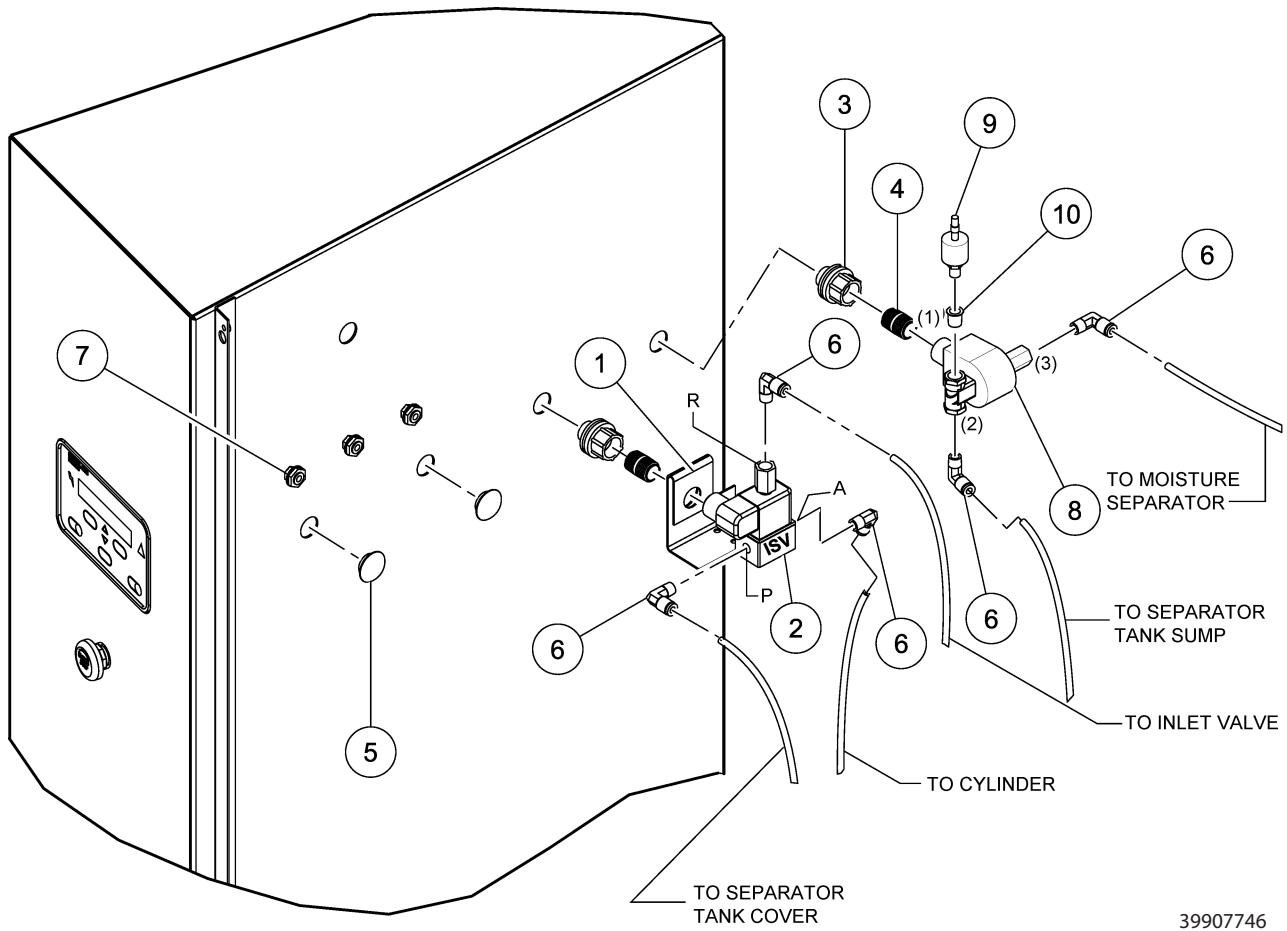


Item	CCN	Qty	Description	Item	CCN	Qty	Description
1	22226898	1	BRACKET, SOLENOID VALVE	7	39155577	2	ELBOW, .13 NPT X .25 TUBING
2	22228019	1	VALVE SOLENOID 3-WAY .25 INCH NPT, 110V 50/60HZ (ISV)	8	39173927	3	GLAND, WIRE
3	35275494	2	HUB. MYER ELECYRIC	9	39583943	1	VALVE, SOLENOID 3-WAY (10SV)
4	39108592	2	NIPPLE, .50 NPT X 1.19 LONG	10	39853809	1	TRANSDUCER, PRESSURE (3APT)
5	39108592	2	PLUG, .50" PUSH IN	11	96742358	4	SCREW, HEX HEAD M4-0.70 X 8.0 LONG
6	39155478	3	ELBOW, .25 NPT X .25 TUBING				



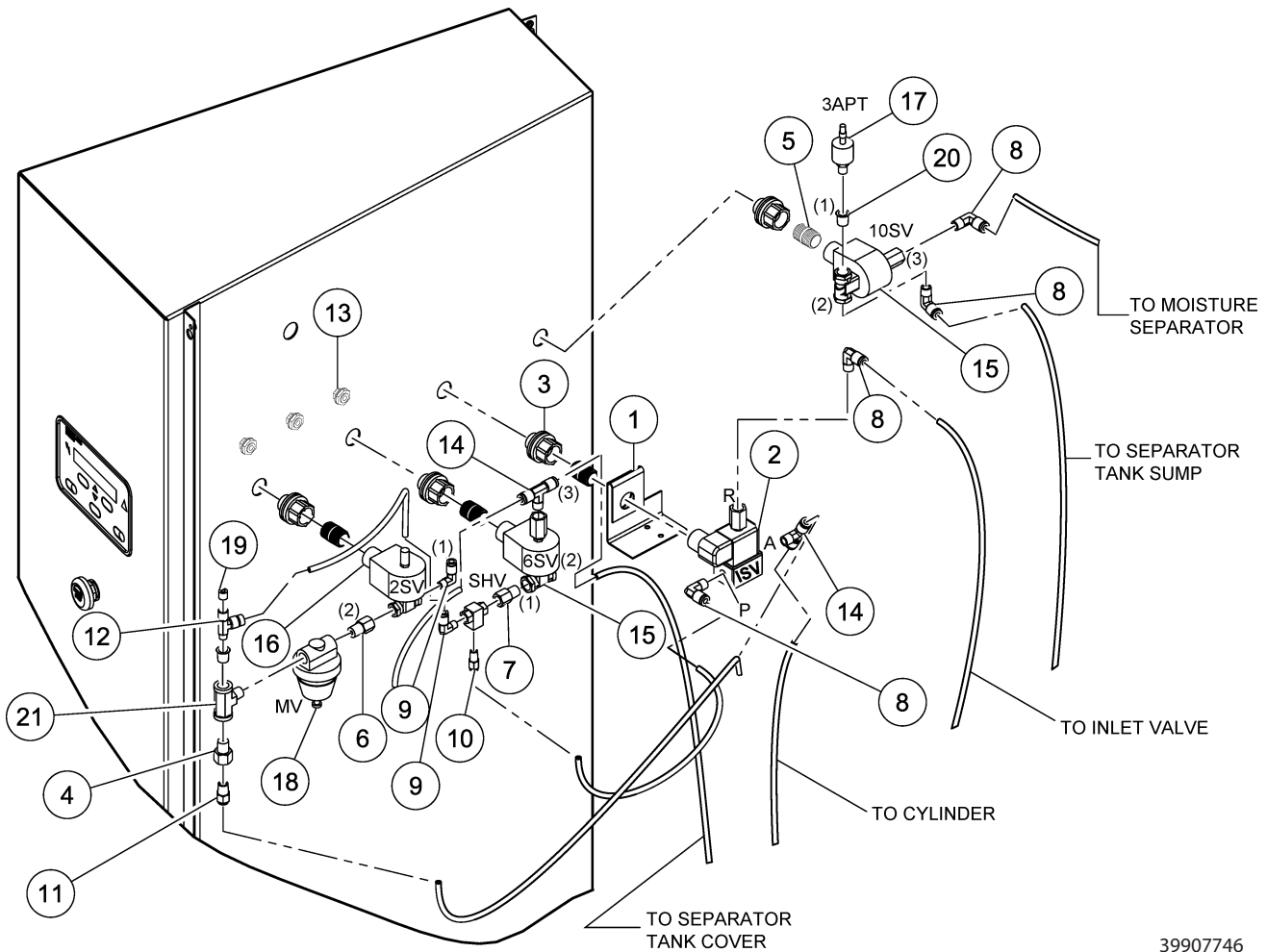
39907639
REV 04

Item	CCN	Qty	Description	Item	CCN	Qty	Description
1	22226898	1	BRACKET, SOLENOID VALVE	15	39181342	1	TEE, BRANCH .25 NPT X .25 TUBE
2	22228019	1	VALVE SOLENOID 3-WAY .25 INCH NPT, 110V 50/60HZ (1SV)	16	39530852	1	VALVE, SOLENOID 2 - WAY (2SV)
3	35275494	4	HUB, MYER ELECTRIC	17	39583943	2	VALVE, SOLENOID 3 - WAY (6SV & 10SV)
4	37081528	1	ORIFICE, NPT .063	18	39853809	1	TRANSDUCER, PRESSURE
5	39108592	4	NIPPLE, .50 NPT X 1 .19 LONG	19	39905542	1	VALVE, REGULATOR (100 & 125 PSIG)
6	39127253	1	BUSHING, REDUCER .25 NPT X .13 FNPT BRASS	-	39905682	1	VALVE, REGULATOR (140 & 165 PSIG)
7	39127261	1	VALVE, SHUTTLE	20	95343679	1	NIPPLE, .13 NPT X .75 LONG
8	39155478	2	ELBOW, .25 NPT X .25 TUBING	21	95837233	1	PLUG, SOCKET .13 NPT
9	39155577	4	ELBOW, .13 NPT X .25 TUBING	22	95930301	1	BUSHING, REDUCER .25 NPT X .13 FNPT
10	39156385	1	TEE, BRANCH .13 NPT X .25 TUBE	23	95940672	1	TEE, BRANCH .25 FNPT X .25 NPT X .25 FNPT
11	39156393	1	CONNECTOR, .13 NPT X .25 TUBING	24	96742358	4	SCREW, HEX HEAD M4-0.70 X 8.0 LONG
12	39156435	1	CONNECTOR, .25 NPT X .25 TUBING				
13	39156468	1	TEE, RUN. .13 NPT X .13 FNPT X .25 TUBE				
14	39173927	3	GLAND, WIRE				



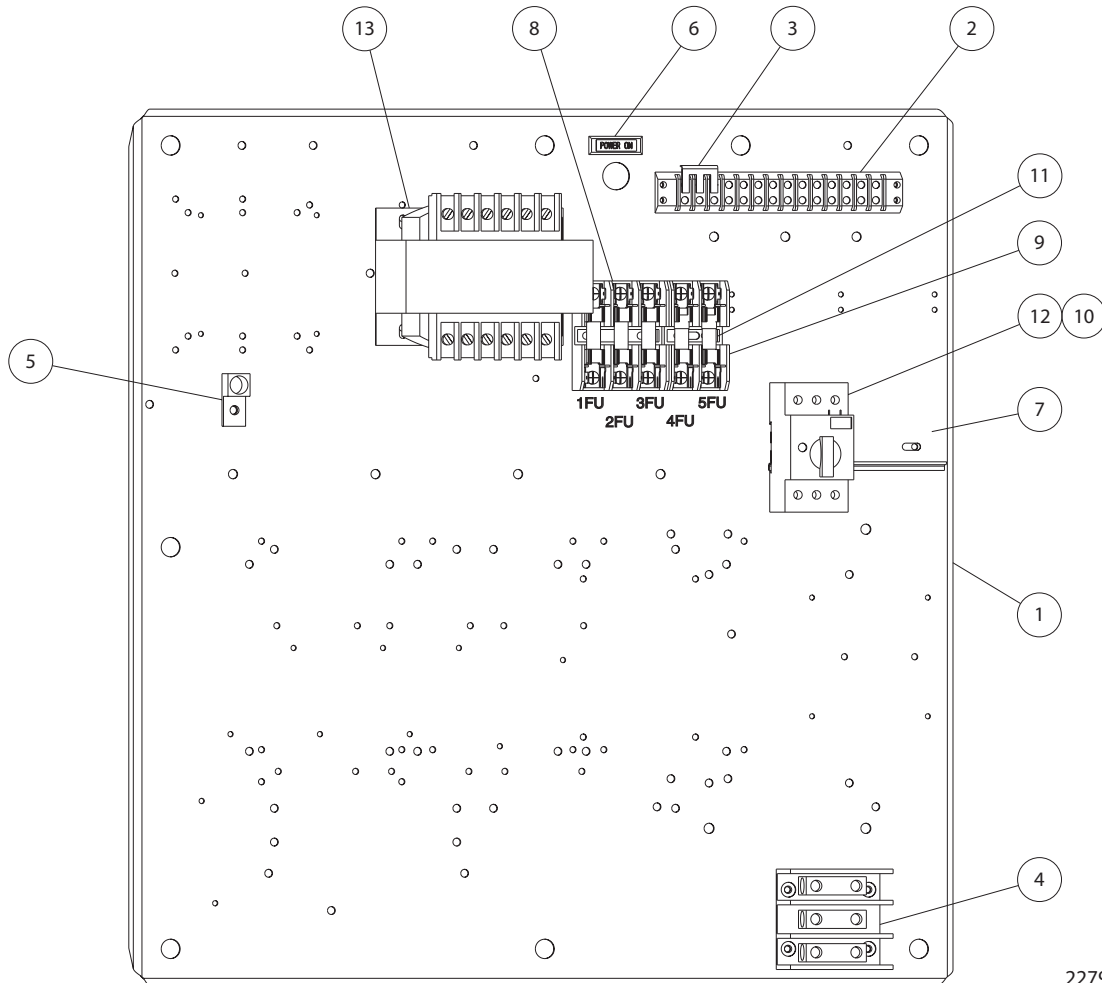
39907746
REV 04

Item	CCN	Qty	Description	Item	CCN	Qty	Description
1	22226898	1	BRACKET, SOLENOID VALVE	7	39173927	3	GLAND, WIRE
2	22228019	1	VALVE SOLENOID 3-WAY .25 INCH NPT, 110V 50/60HZ (15V)	8	39497672	1	VALVE, SOLENOID 3-WAY NEMA 4 (10SV)
3	35275494	2	HUB. MYER ELECYRIC	9	39853809	1	TRANSDUCER, PRESSURE
4	39108592	2	NIPPLE, .50 NPT X 1.19 LONG	10	95930301	1	BUSHING, REDUCER .25 NPT X .13 FNPT
5	39140785	2	PLUG, .50" PUSH IN				
6	39155478	5	ELBOW, .25 NPT X .25 TUBING				



39907746
REV 04

Item	CCN	Qty	Description	Item	CCN	Qty	Description
1	22226898	1	BRACKET, SOLENOID VALVE	13	39173927	3	GLAND, WIRE
2	22228019	1	VALVE SOLENOID 3-WAY .25 INCH NPT, 110V 50/60HZ (1SV)	14	39181342	2	TEE, BRANCH .25 NPT X .25 TUBE
3	35275494	4	HUB, MYER ELECTRIC	15	39497672	2	VALVE, SOLENOID 3 - WAY NEMA 4 (6SV & 10SV)
4	37081528	1	ORIFICE, NPT .063	16	39497680	1	VALVE, SOLENOID 2 - WAY (2SV)
5	39108592	4	NIPPLE, .50 NPT X 1 .19 LONG	17	39853809	1	TRANSDUCER, PRESSURE
6	39127253	2	BUSHING, REDUCER .25 NPT X .13 FNPT BRASS	18	39905542	1	VALVE, REGULATOR (100 & 125 PSIG)
7	39127261	1	VALVE, SHUTTLE	19	95837233	1	PLUG, SOCKET .13 NPT
8	39155478	4	ELBOW, .25 NPT X .25 TUBING	20	95930301	2	BUSHING, REDUCER .25 NPT X .13 FNPT
9	39155577	2	ELBOW, .13 NPT X .25 TUBING	21	95940672	1	TEE, BRANCH .25 FNPT X .25 NPT X .25 FNPT
10	39156393	1	CONNECTOR, .13 NPT X .25 TUBING				
11	39156435	1	CONNECTOR, .25 NPT X .25 TUBING				
12	39156468	1	TEE, RUN. .13 NPT X .13 FNPT X .25 TUBE				

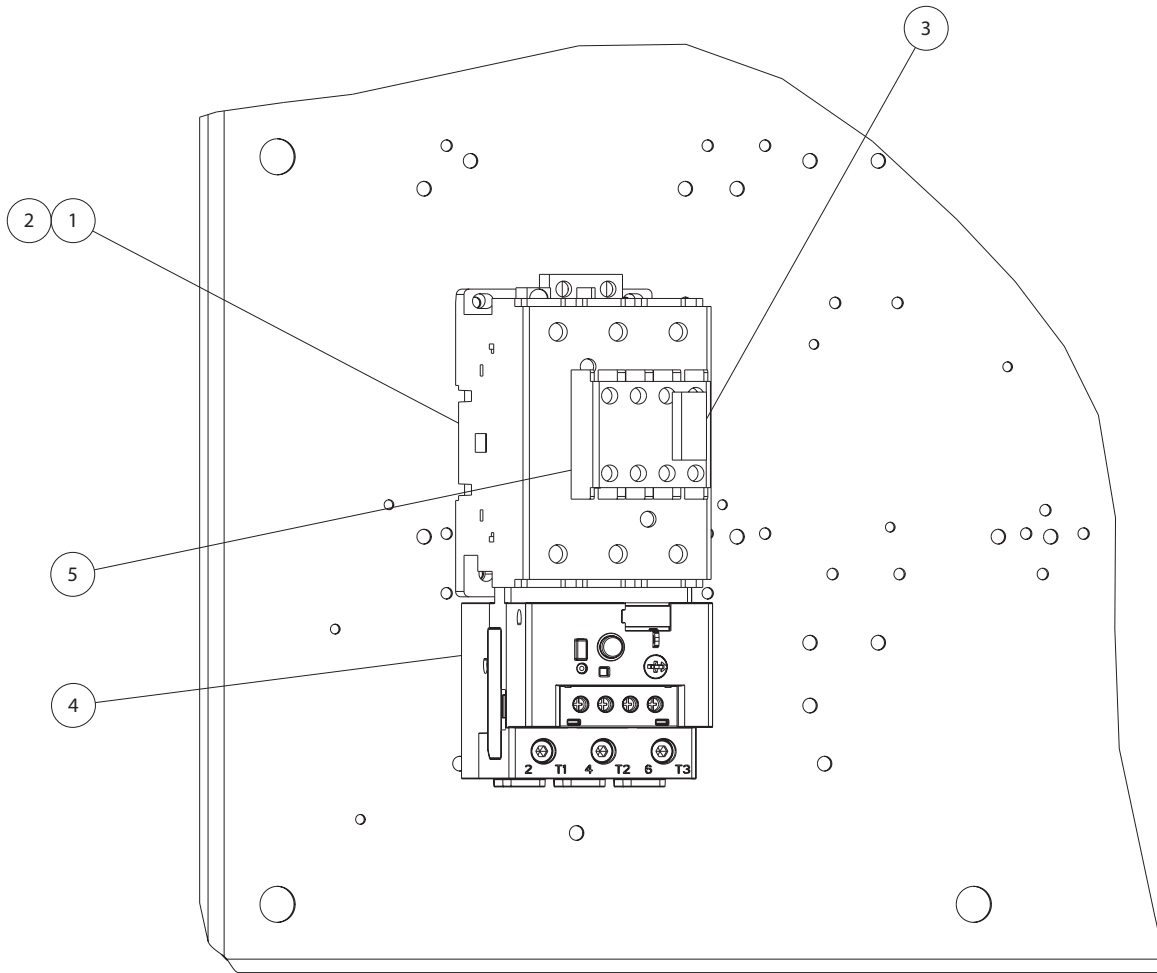


22797237
REV B

Item	CCN	Qty	Description
1	22630677	1	BACKPANEL, STARTER
2	35267202	1	BLOCK, DOUBLE ROW TERMINAL, 14-POSITION
3	39141999	1	JUMPER, TERMINAL 3-POSITION
4	39164520	1	BLOCK, TERMINAL 150 AMP
5	39190939	1	LUG, GROUND
6	39196225	1	LIGHT, POWER ON
7	39325485	1	DIN RAIL
8	39479035	1	HOLDER, FUSE 3 POLE
9	39480504	1	HOLDER, FUSE 2 POLE 600V. 30A. 2 POLE
10	22630925	1	CONTACT, AUXILIARY (FOR MMS)
11	SEE CHART	-	FUSE
12	SEE CHART	-	STARTER, FAN MOTOR
13	SEE CHART	-	TRANSFORMER

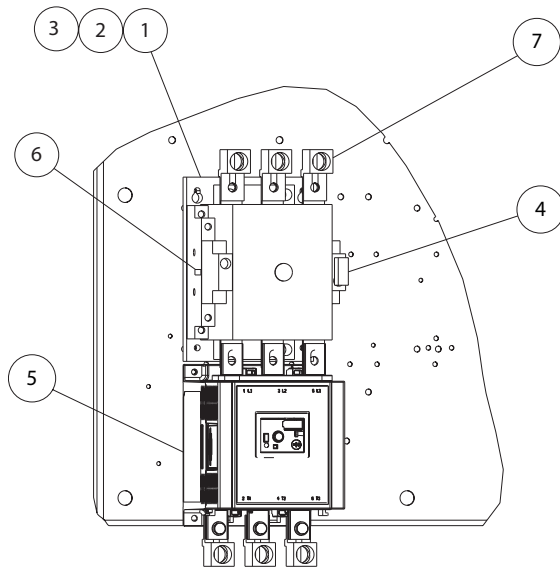
FUSE/TRANSFORMER CHART			
CCN	Qty	Description	Comments
BACKPANEL FOR 60 HZ STARTER SIZES C43, C60 & C72			
39113535	3	FUSE, 250 VOLTS 2 AMPS	
39178710	2	FUSE, REJECTION TYPE 600 VOLTS 1.8 AMPS	
39301981	1	TRANSFORMER 230 VA	
BACKPANEL FOR 50 HZ STARTER SIZES C43, C60 & C72			
39113535	3	FUSE, 250 VOLTS 2 AMPS	
39178710	2	FUSE, REJECTION TYPE 600 VOLTS 1.8 AMPS	
39318134	1	TRANSFORMER 50HZ 230 VA	
BACKPANEL FOR 60 HZ STARTER SIZES C85, D180 & D250			
39113527	1	FUSE, 250 VOLTS 3.2 AMPS	
39113535	2	FUSE, 250 VOLTS 2 AMPS	
39178728	2	FUSE, REJECTION TYPE 600 VOLTS 2.5 AMPS	
39491519	1	TRANSFORMER, CONTROL MULTI-TAP 60 HZ 300 VA	
BACKPANEL FOR 50 HZ STARTER SIZES C85, D180 & D250			
39113527	1	FUSE, 250 VOLTS 3.2 AMPS	
39113535	2	FUSE, 250 VOLTS 2 AMPS	
39178728	2	FUSE, REJECTION TYPE 600 VOLTS 2.5 AMPS	
39318142	1	TRANSFORMER, CONTROL 330 VA 50HZ	

FAN MOTOR STARTER CHART		
Qty	CCN	Description
1	22630925	CONTACT, AUXILIARY (FOR MMS)
1	22395792	STARTER, MANUAL MOTOR RANGE 2.50-4.00
1	22395800	STARTER, MANUAL MOTOR RANGE 4.00-6.30
1	22395818	STARTER, MANUAL MOTOR RANGE 6.30-10.00
1	22630933	STARTER, MANUAL MOTOR RANGE 10-16
1	22630941	STARTER, MANUAL MOTOR RANGE 14.5-20

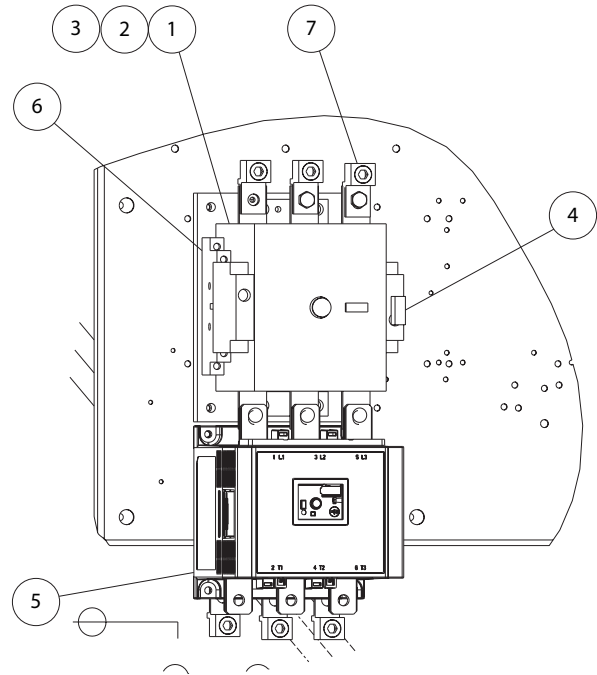


22769723
REV B

Item	CCN	Qty	Description	Item	CCN	Qty	Description
STARTER, C85 FULL VOLTAGE IEC				3	39203443	1	ARC SUPPRESSOR
1	39251020	1	CONTACTOR, 85 AMP	4	23053770	1	RELAY, OVER LOAD EEGE 18-90A
2	39251335	1	COIL, CONTACTOR (NOT SHOWN)	5	39251129	1	CONTACT, AUXILIARY (4) NO

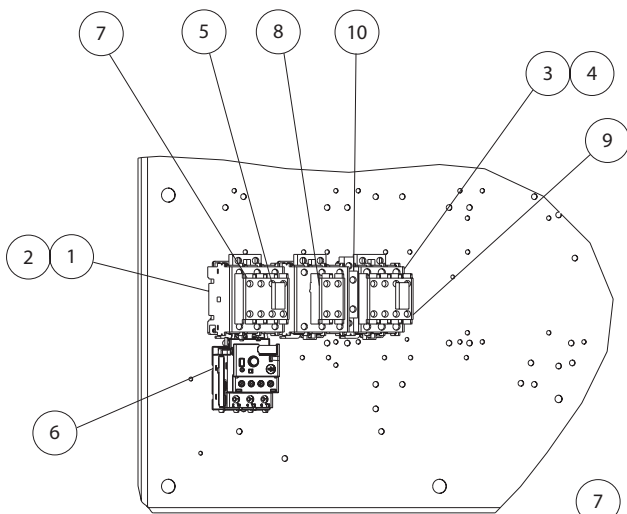


22768337
REV A

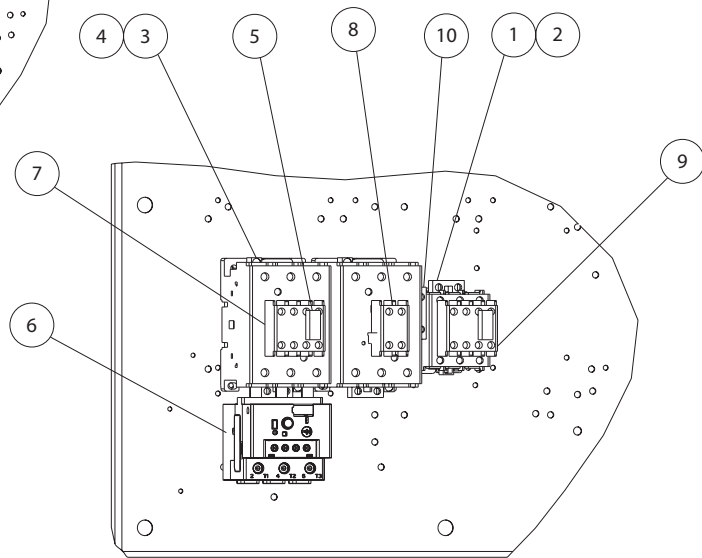


22856967
REV A

Item	CCN	Qty	Description	Item	CCN	Qty	Description
STARTER, D180 FULL VOLTAGE IEC				STARTER, D250 FULL VOLTAGE IEC			
1	22264899	1	CONTACTOR, 180 AMP W/ 1 NO & 1 NC AUX CONTACT	1	22630867	1	CONTACTOR, 250 AMP W/ 1 NO & 1 NC AUX CONTACT
2	22630784	1	COIL, CONTACTOR (NOT SHOWN)	2	22707137	1	COIL, CONTACTOR (NOT SHOWN)
3	22630768	1	KIT, CONTACT (NOT SHOWN)	3	22630834	1	KIT, CONTACT (NOT SHOWN)
4	22630776	1	ARC SUPPRESSOR	4	22630842	1	ARC SUPPRESSOR
5	22630974	1	RELAY, OVERLOAD EEJF (D180)	5	22630982	1	RELAY, OVERLOAD EEKG (D250)
6	22264857	1	CONTACT, AUX. (2 NO)	6	22264857	2	CONTACT, AUX. (2 NO)
7	22630727	2	KIT, TERMINAL LUG (SET OF 3)	7	22630792	2	KIT, TERMINAL LUG (SET OF 3)

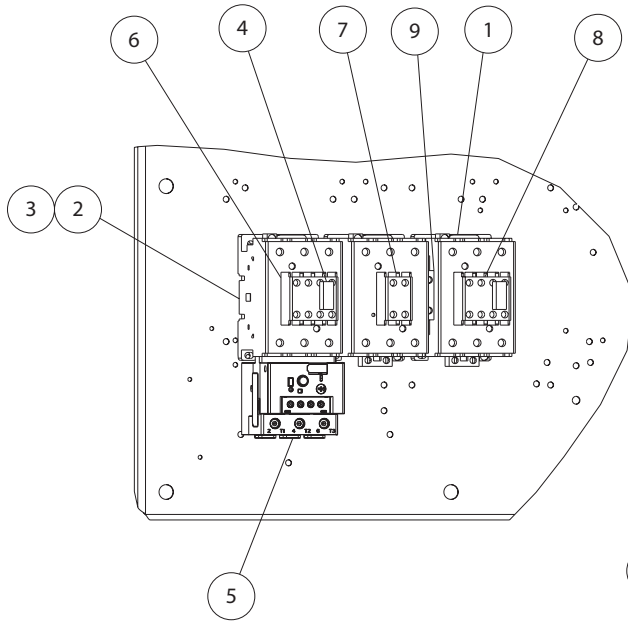


22768345
REV B

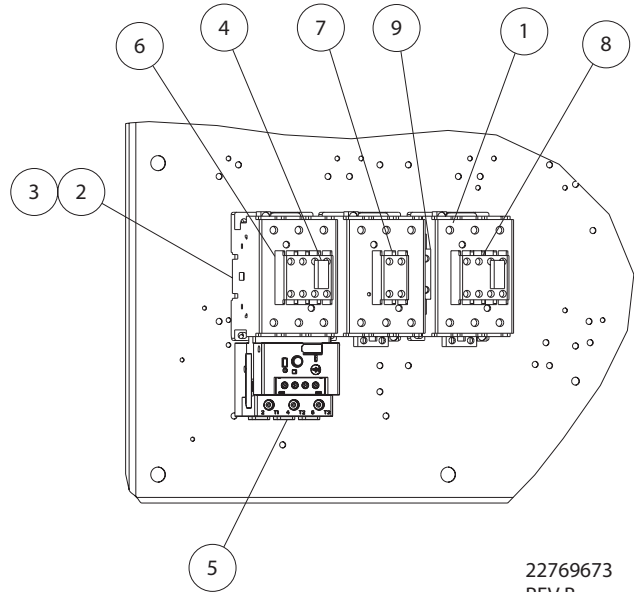


22769566
REV B

Item	CCN	Qty	Description	Item	CCN	Qty	Description
STARTER, C43 W/C37 IS STAR-DELTA IEC				STARTER, C60 W/C43 IS STAR-DELTA IEC			
1	39250998	2	CONTACTOR, 43 AMP	1	39250998	1	CONTACTOR, 43 AMP
2	39251327	2	COIL, CONTACTOR	2	39251327	1	COIL, CONTACTOR
3	39251061	1	CONTACTOR, 37 AMP	3	39251004	2	CONTACTOR, 60 AMP
4	39251319	1	COIL, CONTACTOR	4	39251335	2	COIL, CONTACTOR
5	39203443	2	ARC SUPPRESSOR	5	39203443	2	ARC SUPPRESSOR
6	23053754	1	RELAY, OVER LOAD	6	23053770	1	RELAY, OVER LOAD
7	39251129	1	CONTACT, AUXILIARY (4) NO	7	39251129	1	CONTACT, AUXILIARY (4) NO
8	39251137	1	CONTACT, AUXILIARY (1) NO (1) NC	8	39251137	1	CONTACT, AUXILIARY (1) NO (1) NC
9	39251145	1	CONTACT, AUXILIARY (2) NO (2) NC	9	39251145	1	CONTACT, AUXILIARY (2) NO (2) NC
10	39251186	1	INTERLOCK, MECHANICAL	10	39251186	1	INTERLOCK, MECHANICAL

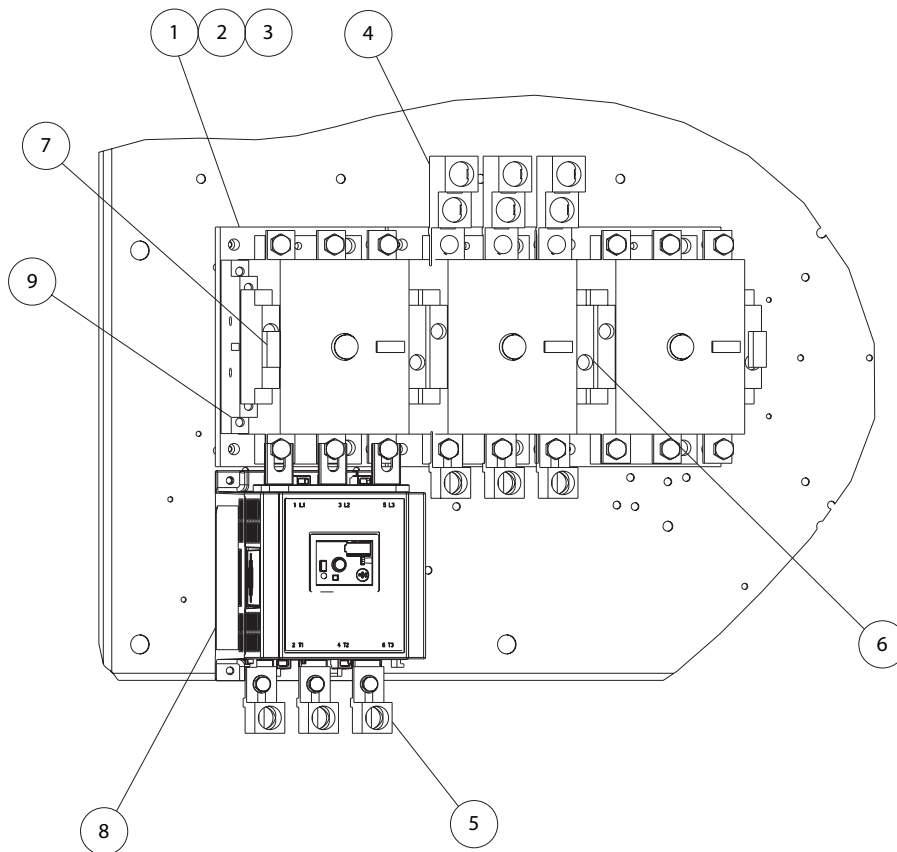


22769567
REV B



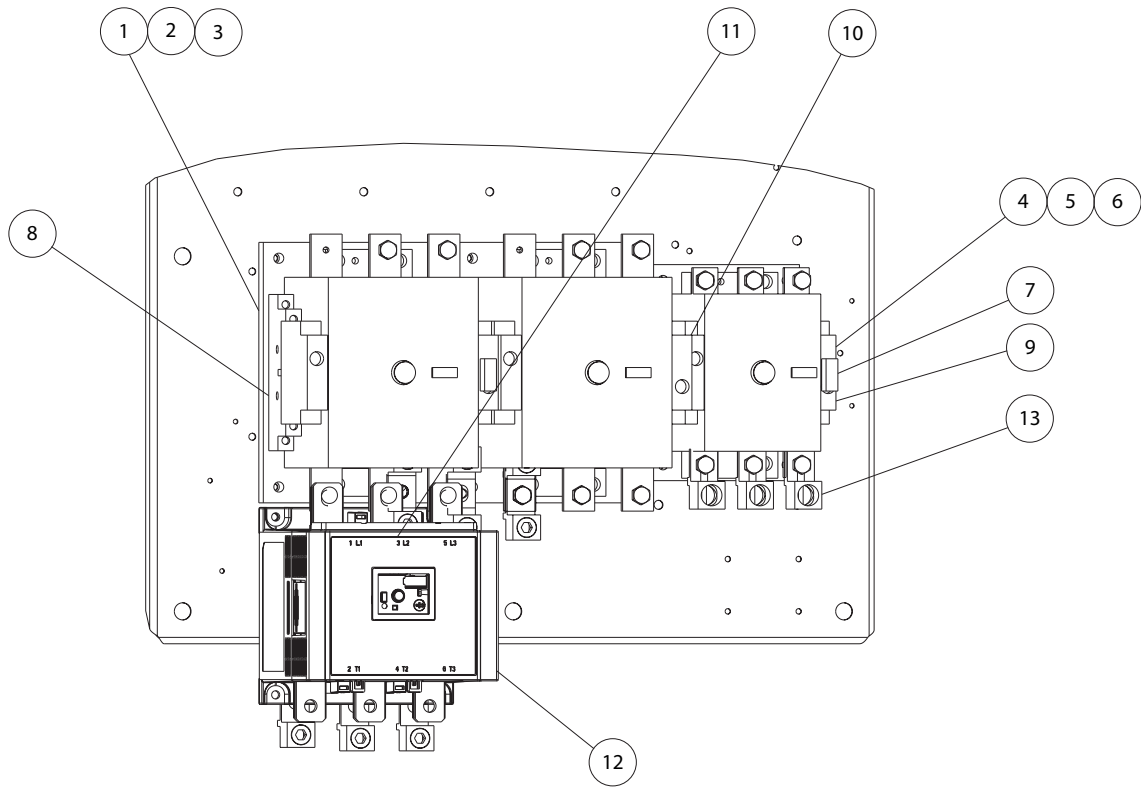
22769673
REV B

Item	CCN	Qty	Description	Item	CCN	Qty	Description
STARTER, C72 W/C60 IS STAR-DELTA IEC				STARTER, C85 W/C60 IS STAR-DELTA IEC			
1	39251004	1	CONTACTOR, 60 AMP	1	39251004	1	CONTACTOR, 60 AMP
2	39251012	2	CONTACTOR, 72 AMP	2	39251020	2	CONTACTOR, 85 AMP
3	39251335	3	COIL, CONTACTOR	3	39251335	3	COIL, CONTACTOR
4	39203443	2	ARC SUPPRESSOR	4	39203443	2	ARC SUPPRESSOR
5	23053770	1	RELAY, OVER LOAD	5	23053770	1	RELAY, OVER LOAD
6	39251129	1	CONTACT, AUXILIARY (4) NO	6	39251129	1	CONTACT, AUXILIARY (4) NO
7	39251137	1	CONTACT, AUXILIARY (1) NO (1) NC	7	39251137	1	CONTACT, AUXILIARY (1) NO (1) NC
8	39251137	1	CONTACT, AUXILIARY (2) NO (2) NC	8	39251137	1	CONTACT, AUXILIARY (2) NO (2) NC
9	39251186	1	INTERLOCK, MECHANICAL	9	39251186	1	INTERLOCK, MECHANICAL



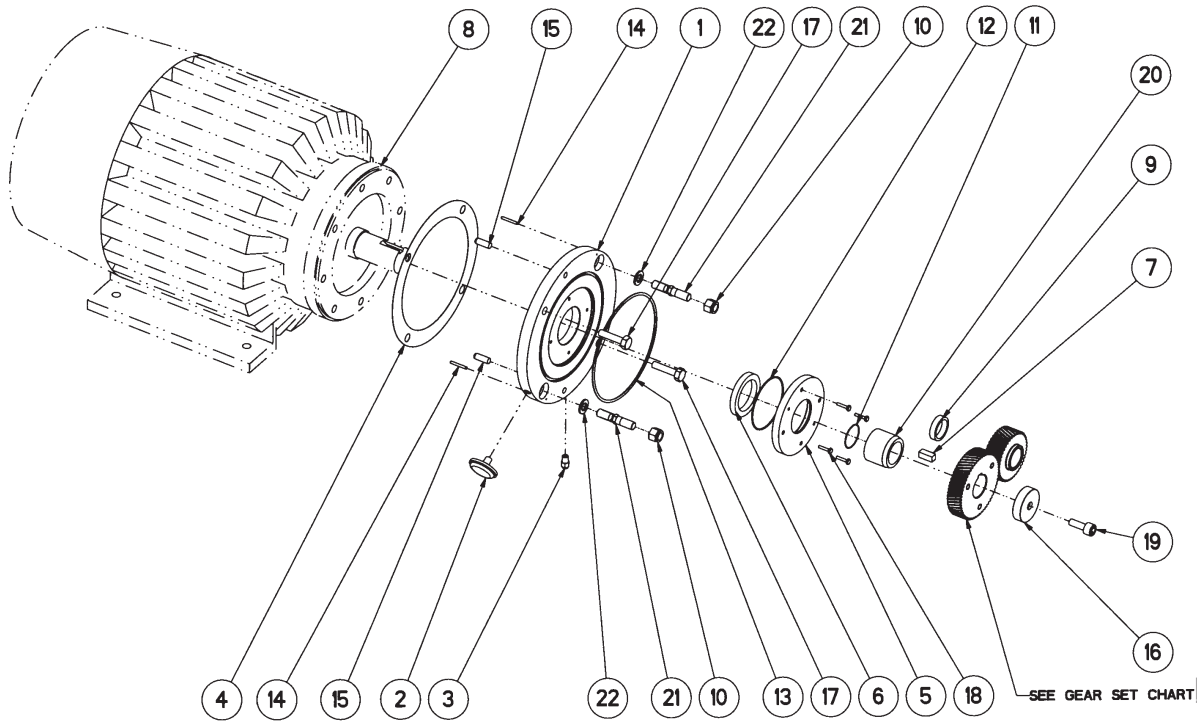
22769681
REV A

Item	CCN	Qty	Description	Item	CCN	Qty	Description
STARTER, D180 W/D180 IS STAR-DELTA IEC				4	22713812	1	KIT, TERMINAL LUG (SET OF 3)
1	22264899	3	CONTACTOR, 180 AMP W/1 NO & 1 NC AUX CONTACT	5	22630727	2	KIT, TERMINAL LUG (SET OF 3)
2	22630784	3	COIL, CONTACTOR (NOT SHOWN)	6	22665855	1	INTERLOCK, ELECT/MECH W/ 2 NC AUX CONTACTS
3	22630768	3	KIT, CONTACT (NOT SHOWN)	7	22630776	2	ARC SUPPRESSOR
				8	22630974	1	RELAY, OVERLOAD EEJF (D180)
				9	22264857	2	CONTACT, AUX. (2 NO)



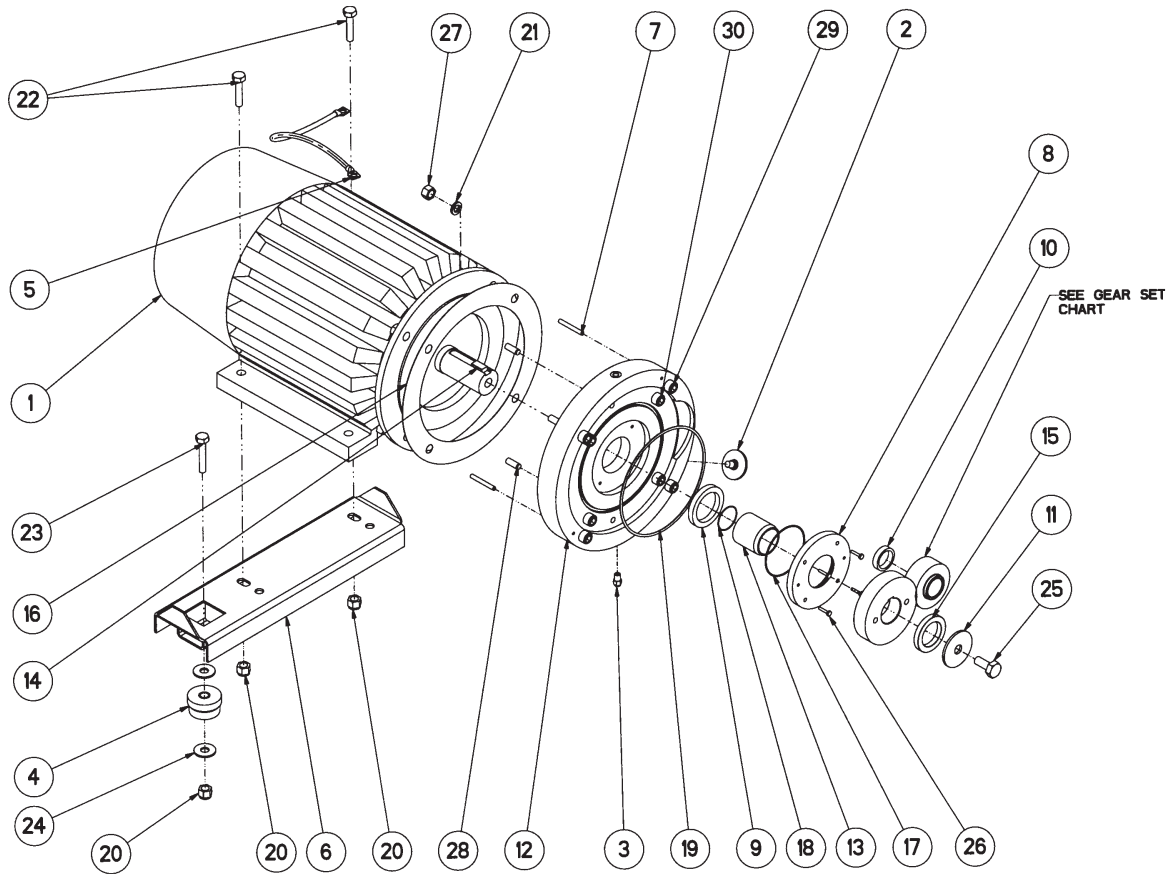
22769699
REV A

Item	CCN	Qty	Description	Item	CCN	Qty	Description
STARTER, D250 W/D180 IS STAR-DELTA IEC				7	22630776	2	ARC SUPPRESSOR
1	22630867	2	CONTACTOR, 250 AMP W/ 1 NO & 1 NC AUX CONTACT	8	22264857	1	CONTACT, AUX. (2 NO)
2	22707137	2	COIL, CONTACTOR (NOT SHOWN)	9	22665830	1	CONTACT, AUX (1-NO & 1-NC)
3	22630834	2	KIT, CONTACT (NOT SHOWN)	10	22665855	1	INTERLOCK, ELECT/MECH W/ 2 NC AUX CONTACTS
4	22264899	1	CONTACTOR, 180 AMP W/1 NO & 1 NC AUX CONTACT	11	22630792	3	KIT, TERMINAL LUG (SET OF 3)
5	22630784	1	COIL, CONTACTOR (NOT SHOWN)	12	22630982	1	RELAY, OVERLOAD EEKG (D250)
6	22630768	1	KIT, CONTACT (NOT SHOWN)	13	22630727	1	KIT, TERMINAL LUG (SET OF 3)



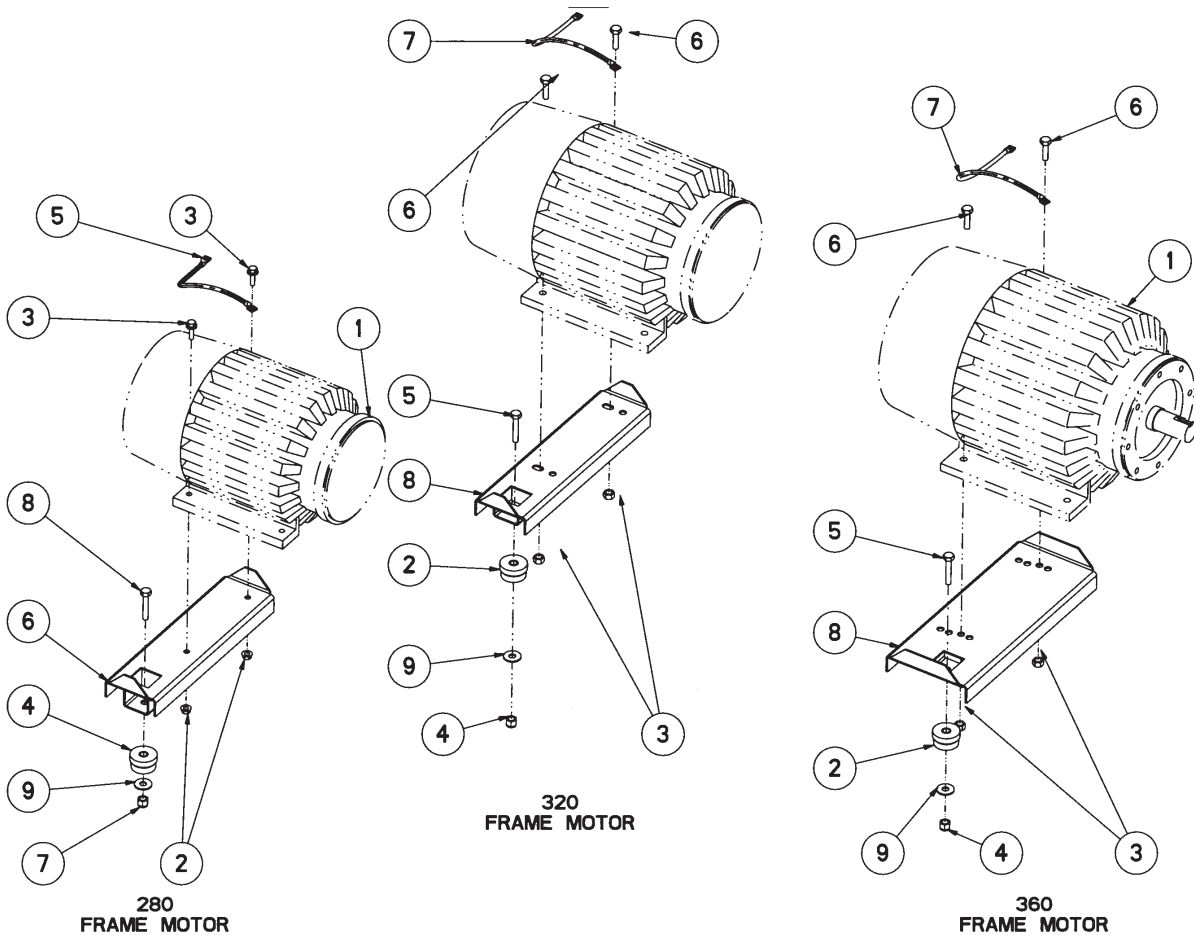
54431622
REV B

Item	CCN	Qty	Description	Item	CCN	Qty	Description
ASSEMBLY, 50 - 60 HP MOTOR/GEAR				16	54396122	1	RING, GEAR RETAINER
1	39860846	1	ADAPTER, MOTOR	17	95234519	2	SCREW, CAP HEX HEAD
2	39111893	1	BREATHER, FILTER	18	96702246	4	SCREW, HEX HEAD
3	39156435	1	CONNECTOR	19	95929170	1	SCREW, SOCKET HEAD CAP
4	39457411	1	GASKET, MOTOR	20	54396114	1	SLEEVE, SHAFT
5	88142427	1	HOUSING, SEAL	21	54420385	2	STANDOFF, MOTOR ADAPTER
6	88142450	1	HOUSING, SEAL	22	96705645	2	WASHER, PRODUCT
7	95410734	1	KEY, SQUARE BOTH ENDS	GEAR SETS			
8	-	1	MOTOR, DRIVE	-	54403837	1	GEAR SET 1.167 RATIO HPE50
9	88143664	1	NUT	-	54403829	1	GEAR SET 1.213 RATIO EP50
10	95923355	2	NUT, HEX LIGHT SELF - LOCKING	-	54403811	1	GEAR SET 1.311 RATIO XFE50
11	95061024	1	O-RING, STANDARD - 032	-	54403902	1	GEAR SET 1.364 RATIO HP60
12	95023107	1	O-RING, STANDARD - 032	-	54403894	1	GEAR SET 1.419 RATIO EP60
13	95656294	1	O-RING, STANDARD - 156	-	54403886	1	GEAR SET 1.537 RATIO XF60
14	95481859	2	PIN, DOWEL HARDENED GROUND MACHINE				
15	95239927	2	PIN, PARALLEL (DOWEL), HARDENED				



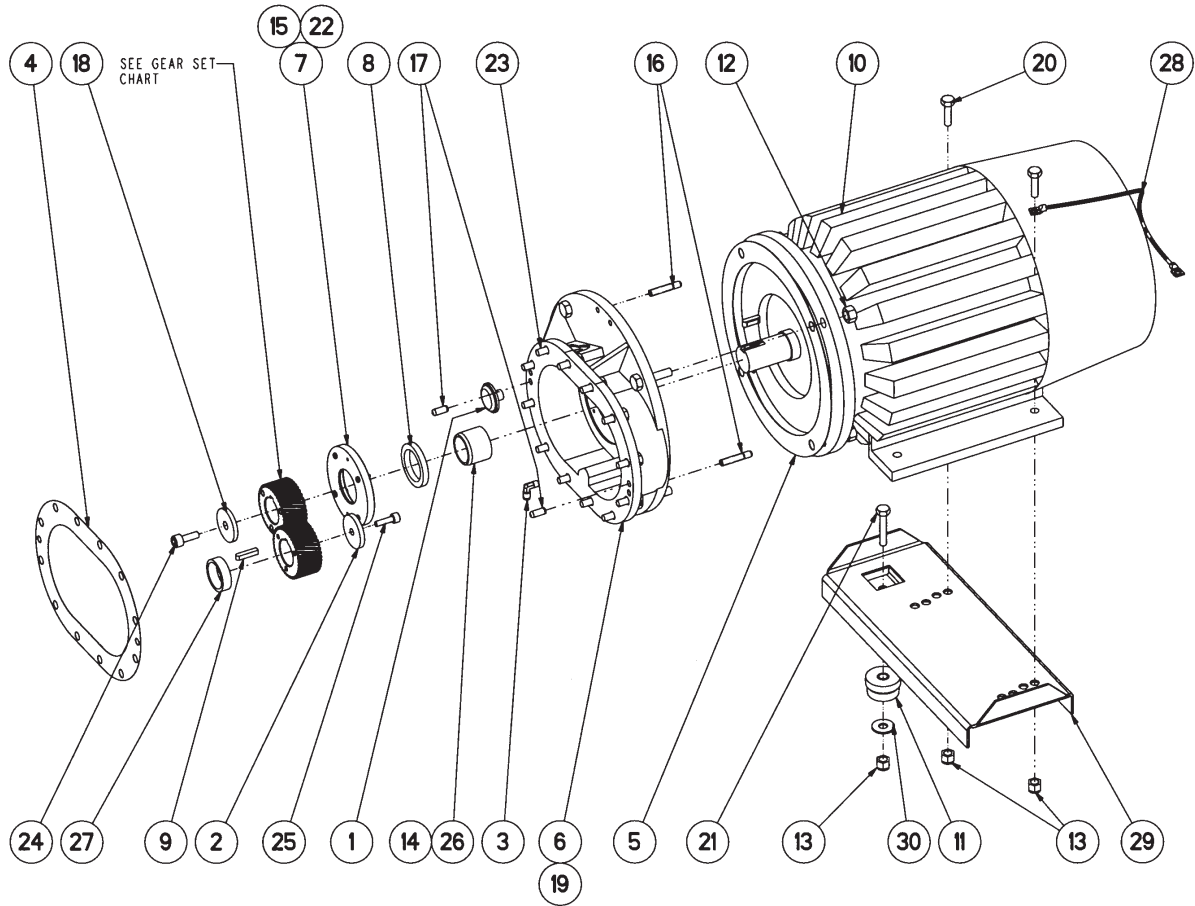
54432760
REV B

Item	CCN	Qty	Description	Item	CCN	Qty	Description
ASSEMBLY, 37-45 KW MOTOR/GEAR				22	95934154	2	SCREW, CAP HEX HEAD
1	-	1	MOTOR, DRIVE	23	95934170	1	SCREW, CAP HEX HEAD
2	39111893	1	BREATHER, FILTER	24	95947651	2	WASHER, PLAIN TYPE A
3	39156435	1	CONNECTOR	25	96700901	1	SCREW, HEX HEAD
4	39326210	1	MOUNT, CENTER BONDED	26	96702246	4	SCREW, HEX HEAD
5	39479860	1	STRAP, GROUND ING	27	96711882	4	NUT, HEX STYLE 1
6	54415245	1	SUPPORT, MOTOR	28	96739743	2	PIN, PARALLEL (DOWEL), HARDENDED
7	88115977	2	DOWEL, PIN	29	96739834	4	SCREW, SOCKET HEAD
8	88142427	1	HOUSING, SEAL	30	96739966	4	SCREW, SOCKET HEAD
9	88142450	1	HOUSING, SEAL	GEAR SETS			
10	88143664	1	NUT	1	88101936	1	GEAR SET 1.53658 RATIO ML 37
11	92898147	1	PATE, RETAINING	2	88101944	1	GEAR SET 1.3636 RATIO MH 37
12	93472215	1	ADAPTER, PLATE	3	88101985	1	GEAR SET 1.8108 RATIO ML 45
13	93481331	1	SLEEVE, SHAFT	4	88115647	1	GEAR SET 1.600 RATIO MH 45
14	93481349	1	KEY, DRIVE. 16 X 10	5	88115720	1	GEAR SET 1.53658 RATIO MM 37
15	93481356	1	RING, RETAINING	6	88115746	1	GEAR SET 1.53658 RATIO ML 45
16	93481364	1	GASKET, SEAL				
17	95023107	1	O-RING, STANDARD - 156				
18	95070272	1	O-RING, STANDARD -033				
19	95720272	1	O-RING, STANDARD -374				
20	95923355	3	NUT, HEX LIGHT SELF - LOCKING				
21	95929188	4	WASHER, LOCK				



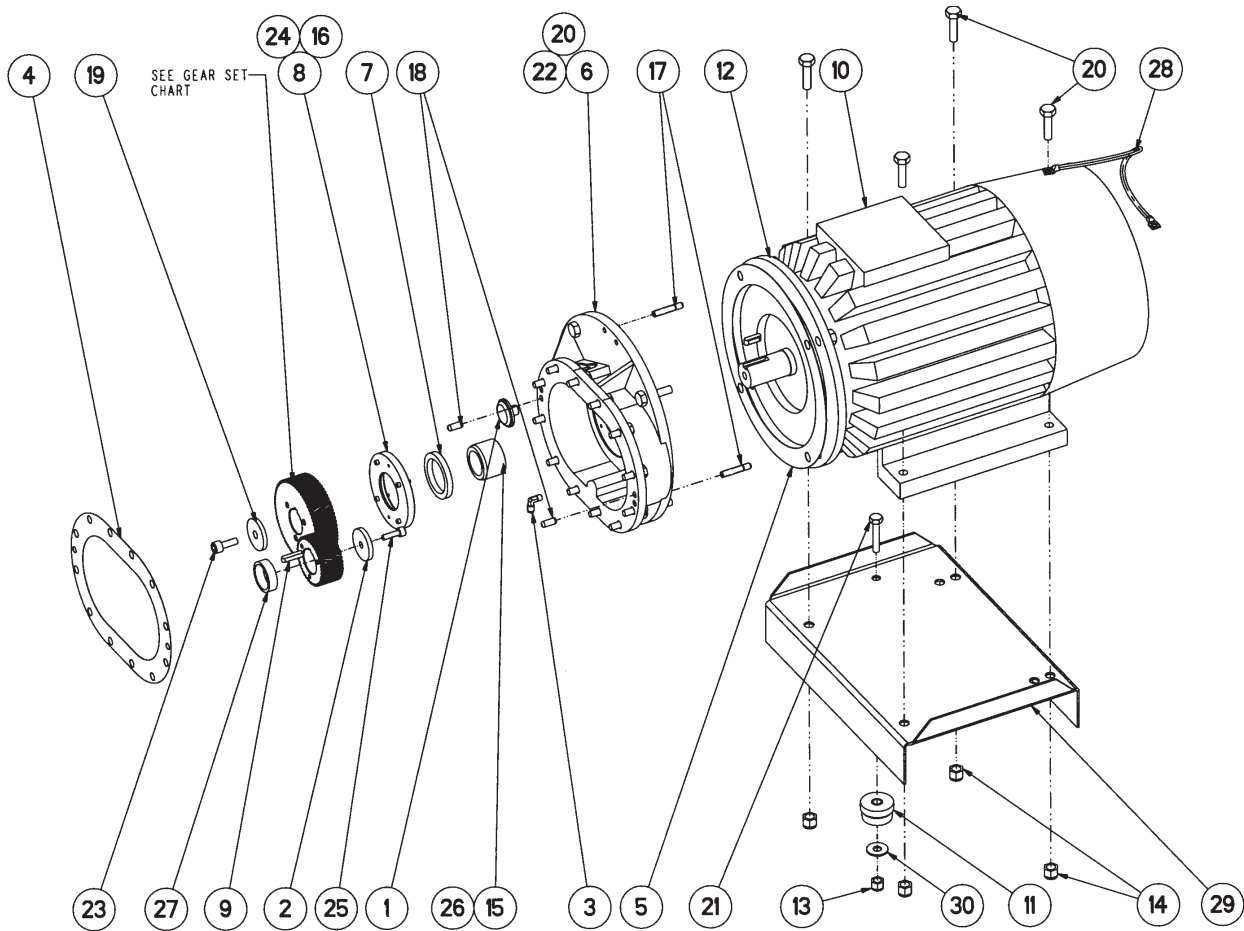
54431580
REV B

Item	CCN	Qty	Description	Item	CCN	Qty	Description
280 FRAME MOTOR & SUPPORT				360 FRAME MOTOR & SUPPORT			
1	-	1	MOTOR, DRIVE	1	-	1	MOTOR, DRIVE
2	39116348	2	NUT, FLANGE	2	39326210	1	MOUNT, CENTER BONDED
3	39128517	2	SCREW, WHIZ LOCK	3	95923355	2	NUT, HEX
4	39326210	1	MOUNT, CENTER BONDED	4	95923355	1	NUT, HEX LIGHT SELF - LOCKING
5	39479860	1	STRAP, GROUNDING	5	95934170	1	SCREW, CAP HEX HEAD
6	39899943	1	SUPPORT, MOTOR	6	95930723	2	SCREW, HEX HEAD
7	95923355	1	NUT, HEX LIGHT SELF - LOCKING	7	39479860	1	STRAP GROUNDING
8	95934170	1	SCREW, CAP HEX HEAD	8	544145245	1	SUPPORT, MOTOR
9	95947651	1	WASHER, PLAIN TYPE A	9	95947651	1	WASHER, PLAIN TYPE A
320 FRAME MOTOR & SUPPORT							
1	-	1	MOTOR, DRIVE				
2	39326210	1	MOUNT, CENTER BONDED				
3	95923355	2	NUT, HEX				
4	95923355	1	NUT, HEX LIGHT SELF - LOCKING				
5	95934170	1	SCREW, CAP HEX HEAD				
6	95930723	2	SCREW, HEX HEAD				
7	39479860	1	STRAP GROUNDING				



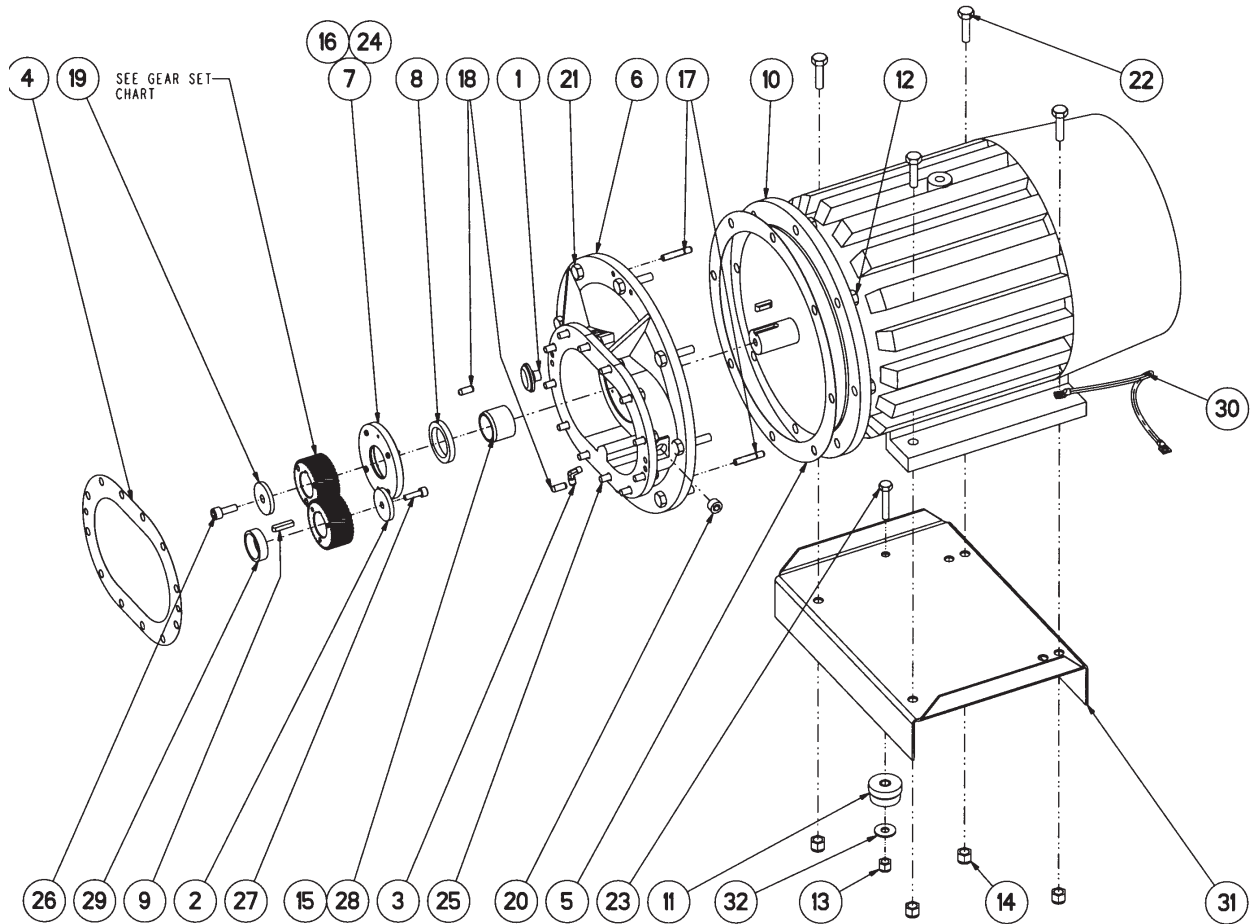
54435904
REV B

Item	CCN	Qty	Description	Item	CCN	Qty	Description
ASSEMBLY, 75 HP MOTOR/GEAR				20	95930723	2	SCREW, CAP HEX HEAD .63 X 2.00 LONG
1	39112362	1	BREATHER, FILTER	21	95934170	1	SCREW, CAP HEX HEAD .63 X 3.00 LONG
2	35255827	1	CLAMP, GEAR	22	96702246	4	SCREW, CAP HEX HEAD M6 X 25.0 LONG
3	39155478	1	ELBOW, .25 NPT X .25 TUBE	23	96702337	12	SCREW, CAP HEX HEAD M6 X 40.0 LONG
4	39437637	1	GASKET, GEAR CASE	24	95013785	1	SCREW, SOCKET HEAD CAP .63 X 1.50 LONG
5	35258573	1	GASKET, GEARCASE MOTOR	25	95929162	1	SCREW, SOCKET HEAD CAP .50 X 1.50 LONG
6	39791744	1	GEARCASE, 364/365 FRAME	26	54429782	1	SLEEVE, SHAFT, 178 60HZ
7	88142427	1	HOUSING, SEAL CF 90	27	35262716	1	SPACER, BEARING
8	88142450	1	HOUSING, SEAL CF 90	28	39479860	1	STRAP, GROUND
9	95381109	1	KEY, SQUARE .36 X .38 X 1.88 NONE	29	39899927	1	SUPPORT, MOTOR 360 FRAME MOTOR
10	-	1	MOTOR, DRIVE 365TSD TEFCT TYPE	30	95947651	1	WASHER, PLAN TYPE A FLAT WIDE. .63
11	35318229	1	MOUNT	GEAR SETS			
12	95922928	4	NUT, HEX FINISHED .75 UNC - 2B	1	39109533	1	GEAR SET HP75
13	95923355	3	NUT, HEX LIGHT SELF - LOCKING .63 - 11UNC	2	39761770	1	GEAR SET EP75
14	95070611	1	O-RING, STANDARD - 034 2.125 ID X 2.062 WIDTH	3	39829262	1	GEAR SET XP75
15	95023107	1	O-RING, STANDARD - 156 4.250 ID X 4.094 WIDTH	4	39868260	1	GEAR SET XF75
16	39194915	2	PIN, DOWEL				
17	95239919	2	PIN, DOWEL HARDENED GROUND MACHINE .150 DIA. X 1.25				
18	39109129	1	PLATE, RETAINER				
19	95929097	4	SCREW, CAP HEX HEAD .75 X 2.75 LONG				



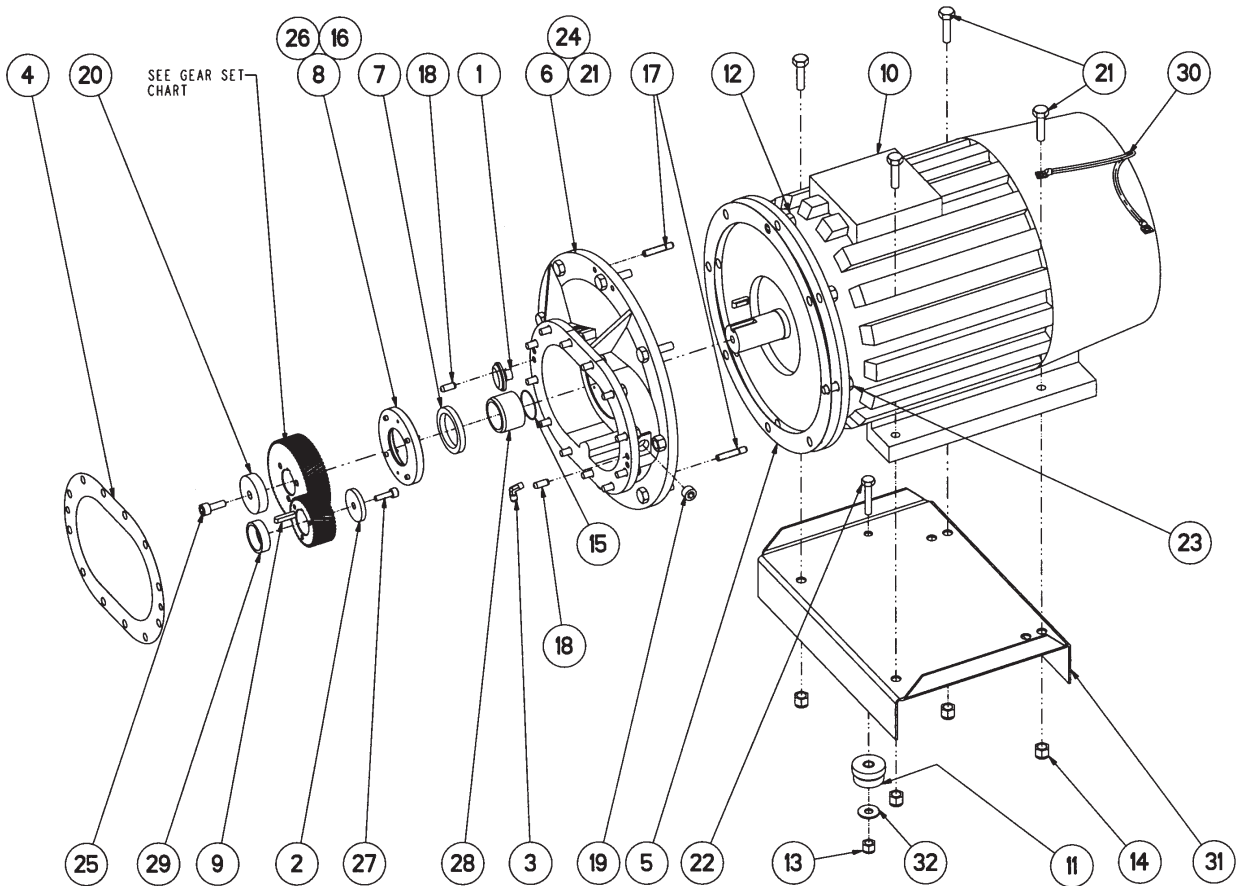
54436001
REV B

Item	CCN	Qty	Description	Item	CCN	Qty	Description
ASSEMBLY, 55 KW MOTOR/GEAR							
1	39112362	1	BREATHER, FILTER	19	39109129	1	PLATE, RETAINER
2	35255827	1	CLAMP, GEAR	20	95929105	8	SCREW, CAP HEX HEAD .75 X 2.50 LONG
3	39155478	1	ELBOW, .25 NPT X .25 TUBE	21	95934170	1	SCREW, CAP HEX HEAD .63 X 3.00 LONG
4	39437637	1	GASKET, GEAR CASE	22	96702337	12	SCREW, CAP HEX HEAD M16 X 40.0 LONG
5	35258573	1	GASKET, GEARCASE MOTOR	23	95013785	1	SCREW, SOCKET HEAD CAP .63 X 1.50 LONG
6	39791744	1	GEARCASE, 364/365 FRAME	24	95929154	4	SCREW, SOCKET HEAD CAP .25 X 1.00 LONG
7	88142427	1	HOUSING, SEAL CF 90	25	95929162	1	SCREW, SOCKET HEAD CAP .25 X 1.50 LONG
8	88142450	1	HOUSING, SEAL CF 90	26	89245286	1	SLEEVE, SHAFT, 178 60HZ
9	95381109	1	KEY, SQUARE .36 X .38 X 1.88 NONE	27	35262716	1	SPACER, BEARING
10	-	1	MOTOR, DRIVE 365TSD TEFCT TYPE	28	39479860	1	STRAP, GROUND
11	35318229	1	MOUNT	29	39899919	1	SUPPORT, MOTOR 400 FRAME MOTOR
12	95922928	4	NUT, HEX FINISHED .75 UNC - 2B	30	95947651	1	WASHER, PLAN TYPE A FLAT WIDE. .63
13	95923355	3	NUT, HEX LIGHT SELF - LOCKING .63 - 11UNC				
14	95923363	4	NUT, HEX LIGHT SELF - LOCKING .75 - 10UNC				
15	95070611	1	O-RING, STANDARD - 034 2.125 ID X 2.062 WIDTH				
16	95023107	1	O-RING, STANDARD - 156 4.250 ID X 4.094 WIDTH				
17	39194915	2	PIN, DOWEL				
18	95239919	2	PIN, DOWEL HARDENED GROUND MACHINE .1.50 DIA. X 1.25				
				GEAR SETS			
				1	39109806	1	GEAR SET MH55
				2	39752944	1	GEAR SET MM55
				3	39756424	1	GEAR SET ML55



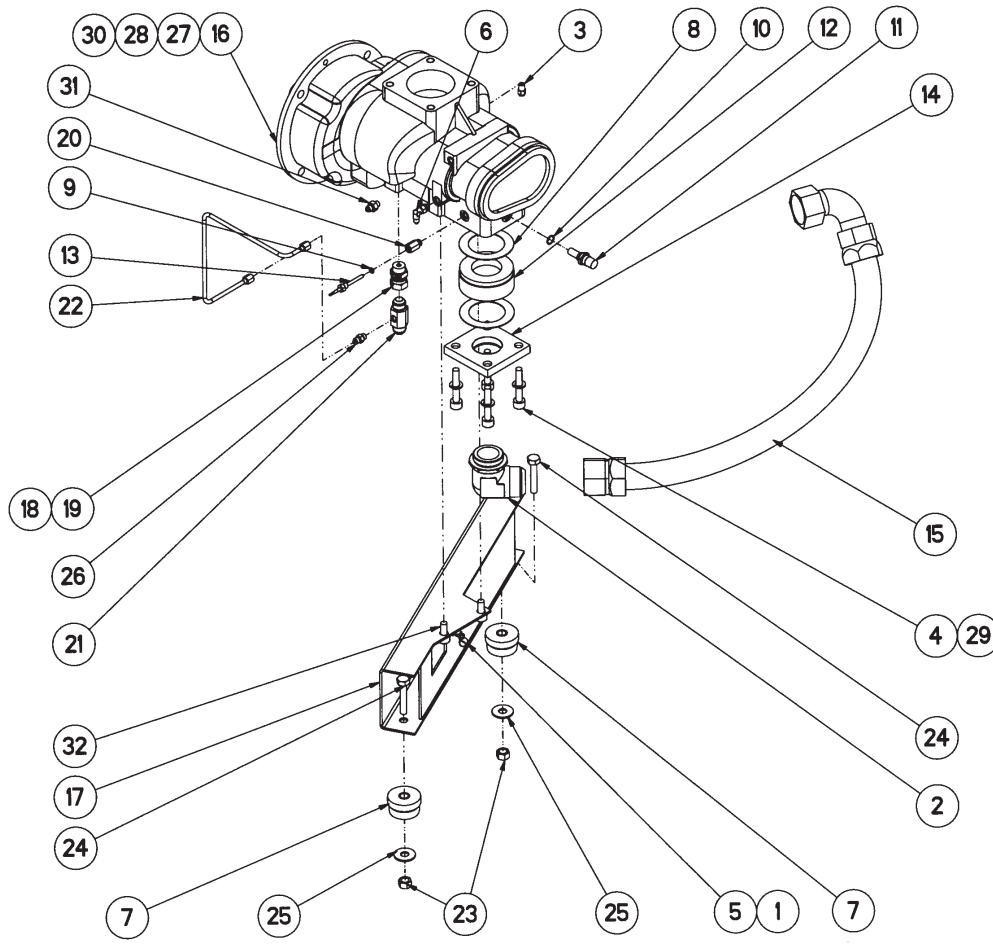
54435912
REV B

Item	CCN	Qty	Description	Item	CCN	Qty	Description
ASSEMBLY, 100HP MOTOR/GEAR				19	39109129	1	PLATE, RETAINER
1	39112362	1	BREATHER, FILTER	20	95947149	1	PLUG, SOCKET .75 NPT
2	35255827	1	CLAMP, GEAR	21	95929097	8	SCREW, CAP HEX HEAD
3	39155478	1	ELBOW, .25 NPT X .25 TUBE	22	95929105	4	SCREW, CAP HEX HEAD
4	39437637	1	GASKET, GEAR CASE	23	95934170	1	SCREW, CAP HEX HEAD
5	39454558	1	GASKET, GEARCASE MOTOR	24	96702246	4	SCREW, CAP HEX HEAD
6	39791751	1	GEARCASE, 404/405 FRAME	25	96702337	12	SCREW, HEX HEAD
7	88142427	1	HOUSING, SEAL CF 90	26	95013785	1	SCREW, SOCKET HEAD CAP
8	88142450	1	HOUSING, SEAL CF 90	27	95929162	1	SCREW, SOCKET HEAD CAP
9	95381109	1	KEY, SQUARE .36 X .38 X 1.88 NONE	28	54429782	1	SLEEVE, SHAFT, 178 60HZ
10	-	1	MOTOR, DRIVE 365TSD TEFCT TYPE	29	35262716	1	SPACER, BEARING
11	35318229	1	MOUNT	30	39479860	1	STRAP, GROUND
12	95922928	8	NUT, HEX FINISHED .75 UNC - 2B	31	39899919	1	SUPPORT, MOTOR 400 FRAME MOTOR
13	95923355	1	NUT, HEX LIGHT SELF - LOCKING .63 - 11UNC	32	95947651	1	WASHER, PLAN TYPE A FLAT WIDE. .63
14	95923363	4	NUT, HEX LIGHT SELF - LOCKING .75 - 10UNC	GEAR SETS			
15	95070611	1	O-RING, STANDARD - 034 2.125 ID X 2.062 WIDTH	1	39109814	1	GEAR SET HP100
16	95023107	1	O-RING, STANDARD - 156 4.250 ID X 4.094 WIDTH	2	39109848	1	GEAR SET EP100
17	39194915	2	PIN, DOWEL	3	39752928	1	GEAR SET XF100
18	95239919	2	PIN, DOWEL HARDENED GROUND MACHINE .150 DIA. X 1.25	4	39868260	1	GEAR SET XP100



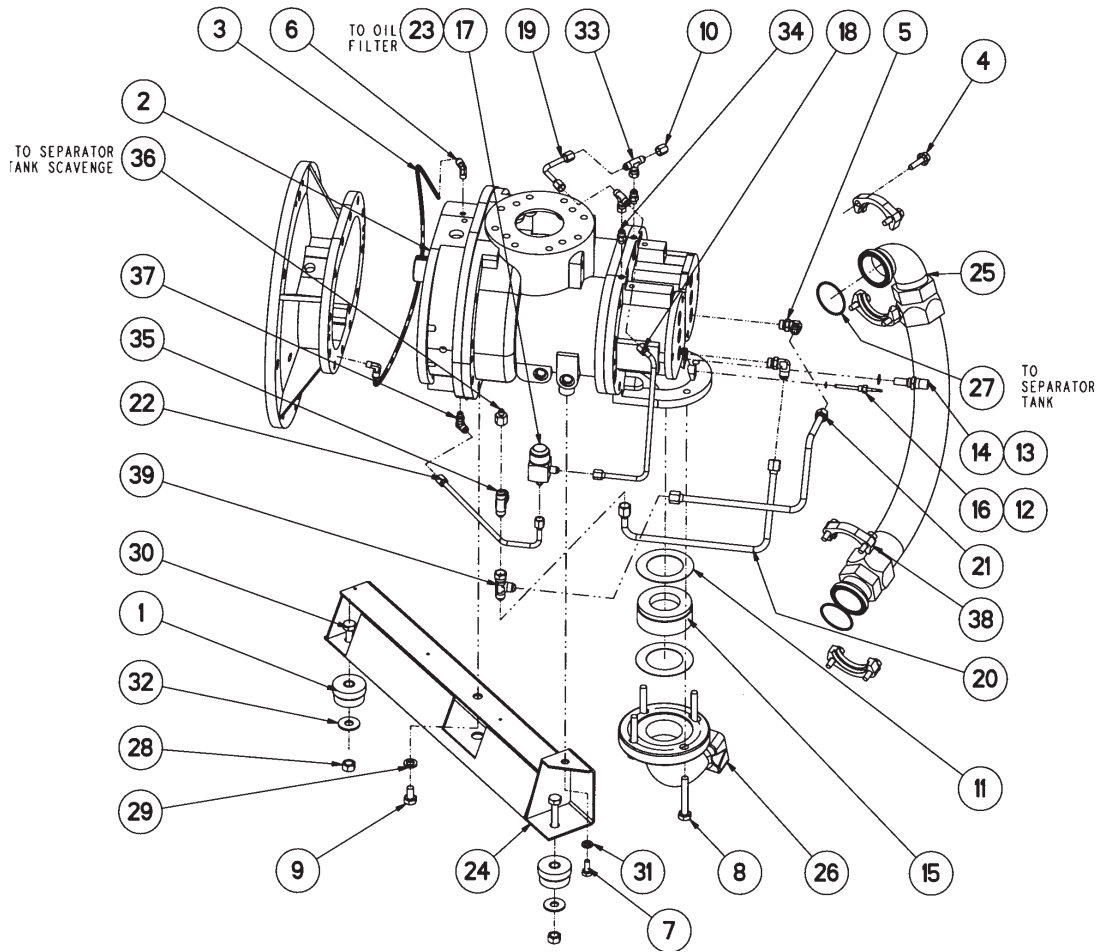
54436019
REV B

Item	CCN	Qty	Description	Item	CCN	Qty	Description
ASSEMBLY, 75 KW MOTOR/GEAR							
1	39112362	1	BREATHER, FILTER	19	95947149	1	PLUG, SOCKET .75 NPT
2	35255827	1	CLAMP, GEAR	20	39404587	1	RETAINER, GEAR
3	39155478	1	ELBOW, .25 NPT X .25 TUBE	21	95929105	11	SCREW, CAP HEX HEAD
4	39437637	1	GASKET, GEAR CASE	22	95934170	1	SCREW, CAP HEX HEAD
5	39454558	1	GASKET, GEARCASE MOTOR	23	95934378	1	SCREW, CAP HEX HEAD .75 X 2.00 LONG
6	39791751	1	GEARCASE, 404/405 FRAME	24	96702337	12	SCREW, HEX HEAD
7	89244024	1	HOUSING, SEAL CF 90	25	95013785	1	SCREW, SOCKET HEAD CAP
8	89244040	1	HOUSING, SEAL CF 90	26	95929154	4	SCREW, SOCKET HEAD CAP
9	95381109	1	KEY, SQUARE .36 X .38 X 1.88 NONE	27	95929162	1	SCREW, SOCKET HEAD CAP
10	-	1	MOTOR, DRIVE 365TSD TEFCT TYPE	28	89246524	1	SLEEVE, SHAFT, 178 60HZ
11	35318229	1	MOUNT	29	35262716	1	SPACER, BEARING
12	95922928	8	NUT, HEX FINISHED .75 UNC - 2B	30	39479860	1	STRAP, GROUND
13	95923355	1	NUT, HEX LIGHT SELF - LOCKING .63 - 11UNC	31	39899919	1	SUPPORT, MOTOR 400 FRAME MOTOR
14	95923363	4	NUT, HEX LIGHT SELF - LOCKING .75 - 10UNC	32	95947651	1	WASHER, PLAN TYPE A FLAT WIDE. .63
15	95069779	1	O-RING, STANDARD - 036 2.375 ID X 2.062 WIDTH	GEAR SETS			
16	95023107	1	O-RING, STANDARD - 156 4.250 ID X 4.094 WIDTH	1	39104849	1	GEAR SET ML75
17	39194915	2	PIN, DOWEL	2	39109517	1	GEAR SET MM75
18	95239919	2	PIN, DOWEL HARDENED GROUND MACHINE .1.50 DIA. X 1.25	3	39753793	1	GEAR SET MH75



54432430
REV B

Item	CCN	Qty	Description	Item	CCN	Qty	Description
ASSEMBLY, AIREND 50/60 HP 37/45 KW							
1	39133145	1	SCREW, WASHER HEAD TAPPING	17	85540888	1	SUPPORT, AIREND
2	39140512	1	ELBOW	18	54428313	1	ORIFICE, .277 DIA. (50HP/ 37KW)
3	39156435	1	CONNECTOR	19	54441522	1	ORIFICE, .375 DIA. (60HP/45KW)
4	39178637	4	CLAMP	20	54461066	1	ADAPTER, STANDOFF
5	39206057	1	CLAMP	21	93481562	1	MANIFOLD, INJECTION
6	39311618	1	ELBOW	22	93481570	1	TUBE
7	39326210	2	MOUNT, CENTER BONDED	23	95923355	2	NUT, HEX
8	39326228	2	GASKET, DISCHARGE ELBOW	24	95934170	2	SCREW, HEX HEAD
9	39404157	1	O-RING, 1D .351	25	95947651	2	WASHER, PLAIN WIDE TYPE B
10	39404165	1	O-RING, 1D .644	26	95989695	1	CONNECTOR
11	39419668	1	SWITCH, HAT	27	96702170	2	SCREW, SOCKET HEAD
12	39477674	1	VALVE, CHECK	28	96708144	3	SCREW, SOCKET HEAD
13	39586227	1	SENSOR, TEMPERATURE	29	96721097	4	WASHER, SPRING LOCK
14	54385703	1	PLATE, ADAPTER	30	96726328	5	SCREW, SOCKET HEAD
15	23041221	1	HOSE, HYDRAULIC	31	96739701	1	CONNECTOR
16	54416920	1	AIREND, CF 90	32	96739966	2	SCREW, SOCKET HEAD

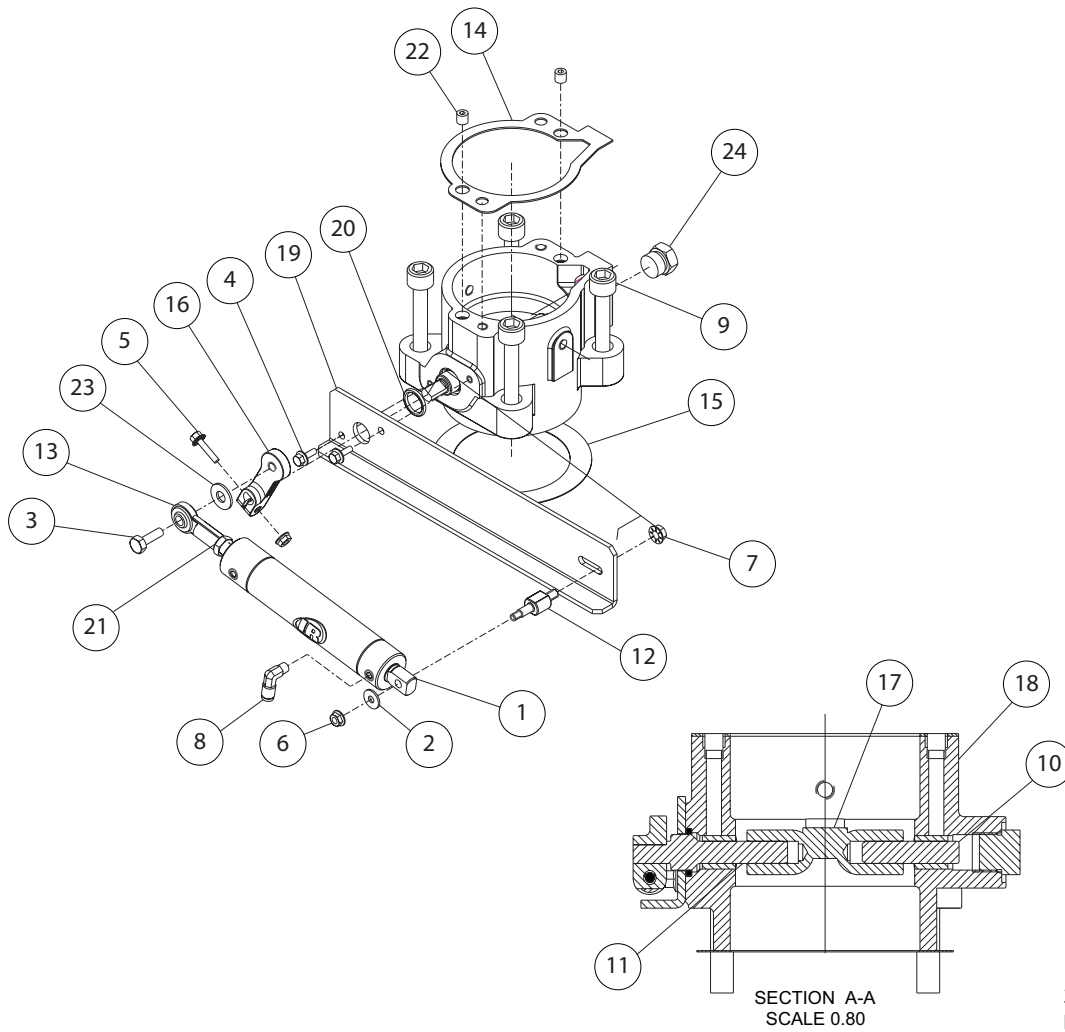


39902952
REV 05

Item	CCN	Qty	Description	Item	CCN	Qty	Description
1	35318229	2	MOUNT	21	39890413	1	TUBE, BEARING SCAVENGE
2	36017028	1	ASSEMBLY, AIREND 178MM	22	39890421	1	TUBE, BEARING FEED
3	39124813	1	TUBE, NYLON	23	39890652	2	MANIFOLD, OIL INJECTION ORIFICE, .313 (100HP/75KW)
4	39128517	8	SCREW, WHIZ LOCK .50 X 1.50 LONG ZINC PLATED	24	85540078	1	SUPPORT, AIR END 178MM
5	39128640	2	ELBOW, .50 TUBE X .75 SAE	25	23041259	1	HOSE, HYDRAULIC 2.50 NOMINAL X 33.30 LONG
6	39155478	2	ELBOW, .25 NPT X .25 TUBE	26	85540755	1	ELBOW, DISCHARGE
7	39173463	1	SCREW, HEX HEAD	27	95028502	2	O-RING, ID 2.75 WIDTH .139
8	39177159	4	SCREW, HEX HEAD	28	95923355	2	NUT, HEX .63
9	39177886	1	SCREW, HEX HEAD	29	95929188	1	WASHER, LOCK EXTRA DUTY .63
10	39232566	1	CAP, .38 TUBE	30	95934170	2	SCREW, HEX HEAD
11	39326228	2	GASKET, DISCHARGE ELBOW 178MM AIREND	31	95934733	1	WASHER, LOCK EXTRA DUTY .50
12	39404157	1	O-RING, ID .351 WIDTH .072	32	95947651	2	WASHER, PLAIN WIDE TYPE B .63
13	39404165	1	O-RING, ID .644 WIDTH .087	33	95959581	2	TEE, BRANCH .38 TUBE X .38 FEMALE TUBE X .38 TUBE
14	39419668	1	SWITCH, HAT 245 DEG. F	34	95959607	2	CONNECTOR, .38 TUBE X .44 SAE
15	39586227	1	SENSOR, TEMPERATURE THERMISTOR	35	95959615	1	TEE, BRANCH 50 TUBE X .75 SAE X .50 TUBE
16	39586227	1	SENSOR, TEMPERATURE THERMISTOR	36	95959722	1	REDUCER, .50 FEMALE TUBE TO .25 TUBE
17	39890371	11	MANIFOLD, OIL INJECTION ORIFICE, .219 (75HP/55KW)	37	95959730	1	ELBOW, .38 TUBE X .44 SAE
18	39890389	1	TUBE, BEARING FEED	38	95961496	4	CLAMP, 4 BOLT 2.5 INCH
19	39890397	1	TUBE, BEARING FEED	39	9596129	1	TEE, RUN .50 TUBE X .50 TUBE X .50 FEMALE TUBE
20	39890405	1	TUBE, BEARING SCAVENGE				

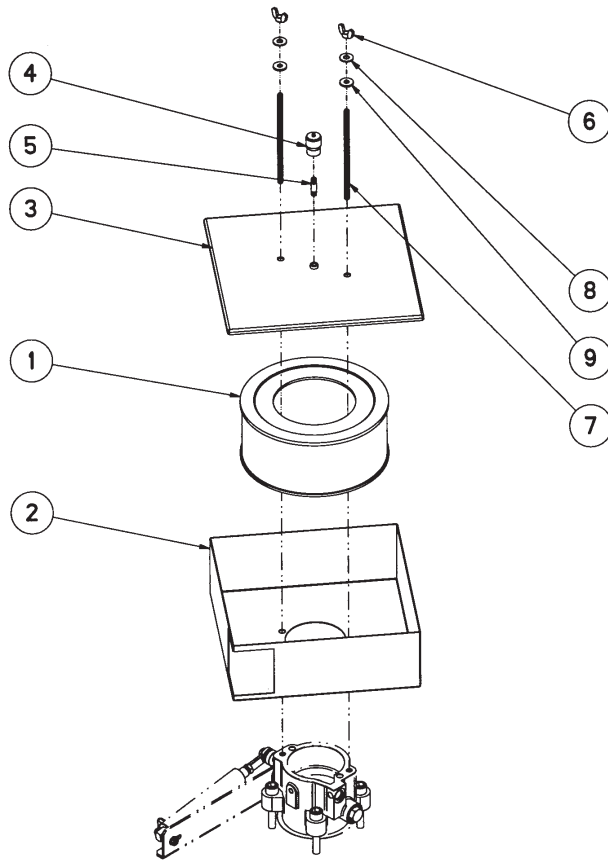
SSR50E-100HP

<http://air.irco.com>



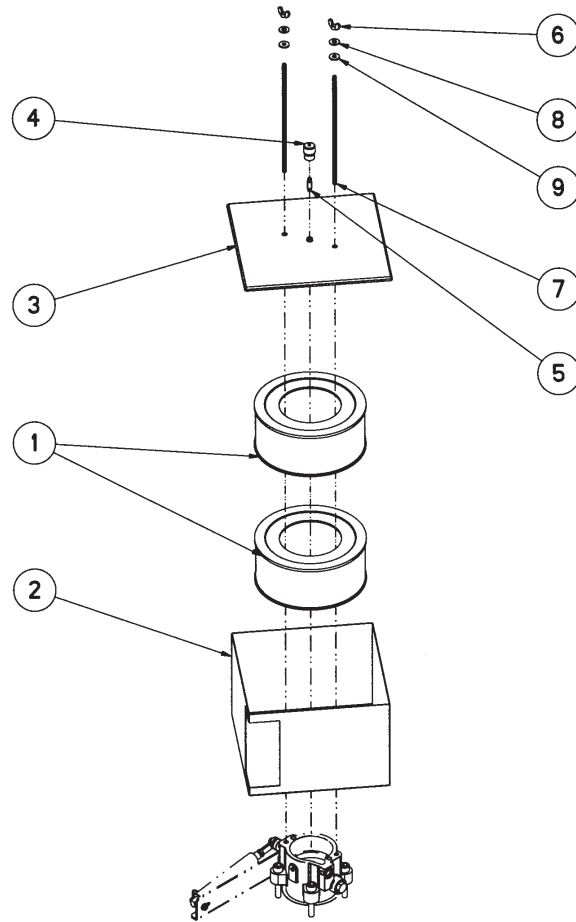
SECTION A-A
SCALE 0.80
39894175
REV 08

Item	CCN	Qty	Description	Item	CCN	Qty	Description
1	22334155	1	CYLINDER, PNEUMATIC	14	39326319	1	GASKET, INLET VALVE
2	35317114	1	WASHER, PLAIN REGULAR M6	15	39476304	1	GASKET, INLET VALVE TO AIREND
3	39128152	2	SCREW, HEX HEAD .38 X 1.00 LONG	16	39586656	1	ARM, INLET VALVE
4	39128426	1	SCREW, WHIZ LOCK .25 X .63 LONG ZINC PLATED	17	39851316	1	VALVE, PLATE (MACHINING)
5	39128434	2	SCREW, WHIZ LOCK .25 X 1.00 LONG ZINC PLATED	18	39894142	1	HOUSING, VALVE INLET (MACHINING)
6	39128541	1	NUT, WHIZ LOCK .25 ZINC PLATED	85541043		1	HOUSING, VALVE INLET (MACHINING), BEIGE
7	39128558	1	NUT, WHIZ LOCK .31 ZINC PLATED	19	85540904	1	BRACKET, CYLINDER INLET VALVE
8	39155577	4	ELBOW, .13 NPT X .25 TUBING	20	95022141	1	O-RING, ID .796 WIDTH .139
9	39178637	1	SCREW, SOCKET HEAD M16 X 80.0 LONG	21	95245288	1	NUT, JAM .44
10	39311352	1	SHAFT, INLET VALVE	22	95837233	2	PLUG, SOCKET .13 NPT -
11	39324900	1	SHAFT, INLET VALVE	23	95933313	1	WASHER, PLAIN WIDE TYPE B .38
12	39325097	1	SPACER, CYLINDER INLET VALVE	24	95938940	1	PLUG, HEX .88 SAE -
13	39325154	1	ROD, END BEARING				



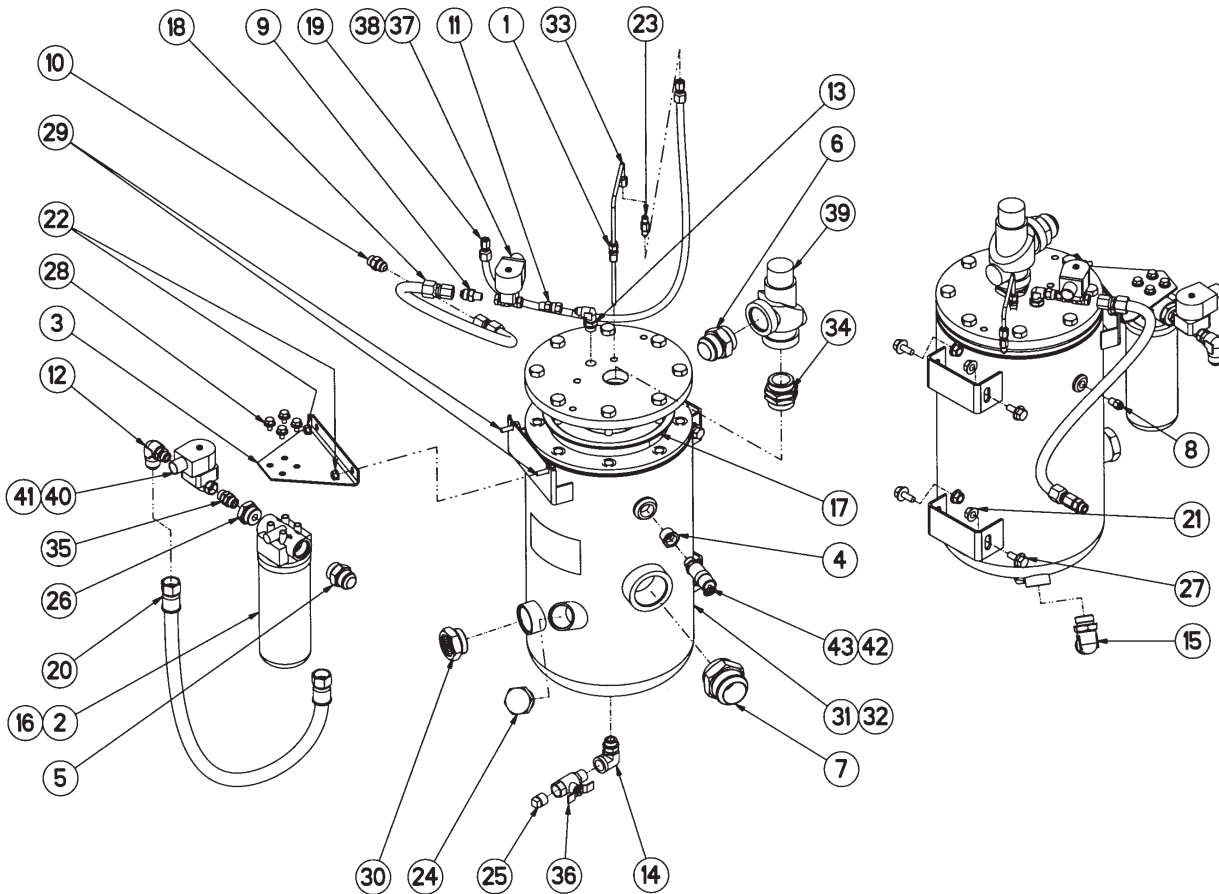
54444930
REV B

Item	CCN	Qty	Description	Item	CCN	Qty	Description
1	39708466	1	ELEMENT, AIR FILTER	6	95938775	2	NUT, WING TYPE A
2	85540607	1	HOUSING, AIR FILTER	7	39308978	2	STUD
3	85540615	1	HOUSING, AIR FILTER TOP METAL	8	95933313	2	WASHER, PLAIN TYPE A
4	22097208	1	INDICATOR, AIR FILTER	9	39195151	2	WASHER, RUBBER
5	95871828	1	NIPPLE				



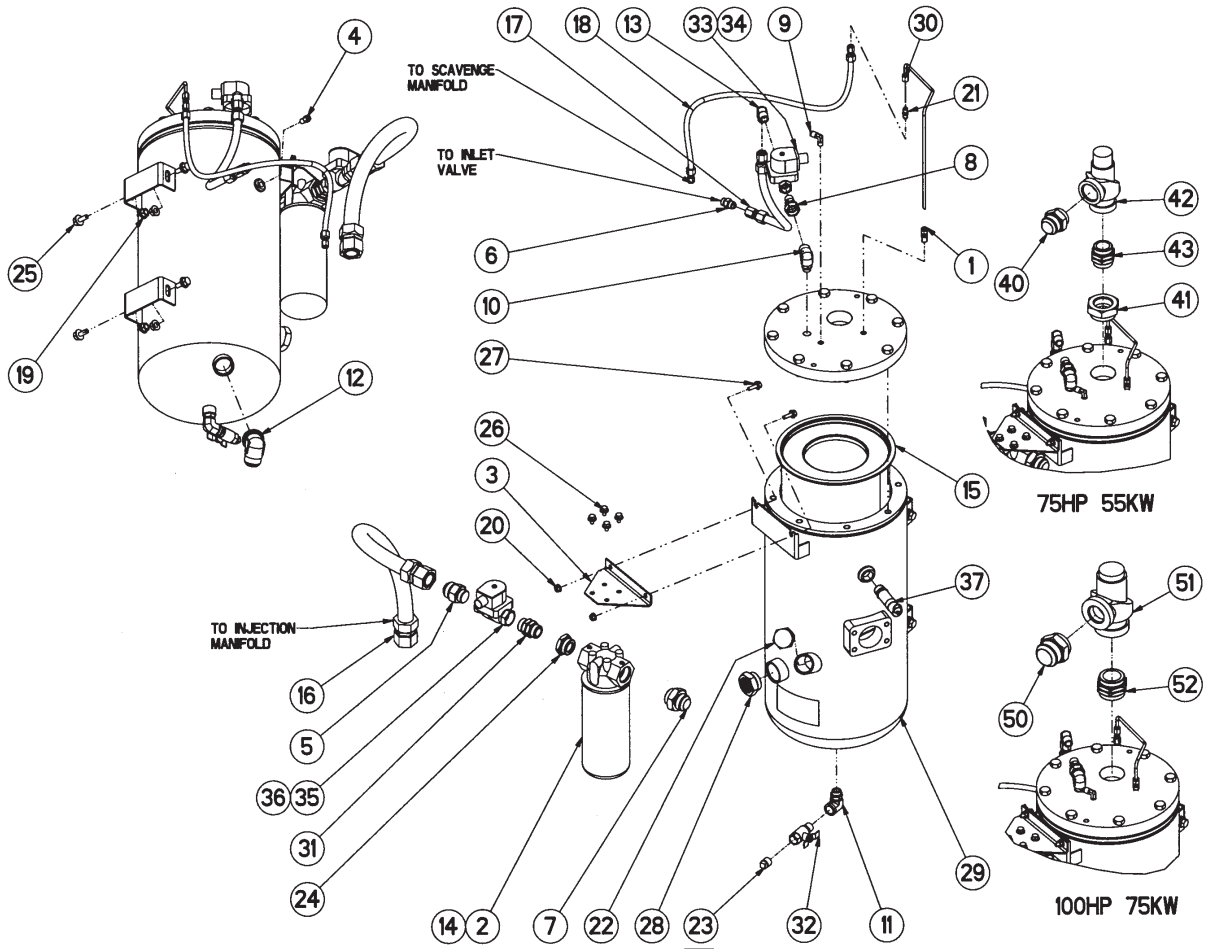
54444559
REV B

Item	CCN	Qty	Description	Item	CCN	Qty	Description
1	39708466	2	ELEMENT, AIR FILTER	6	95938775	2	NUT, WING TYPE A
2	85540623	1	HOUSING, AIR FILTER	7	39308960	2	ROD, THREAD
3	85540615	1	HOUSING, AIR FILTER TOP METAL	8	95933313	2	WASHER, PLAIN TYPE A
4	22097208	1	INDICATOR, AIR FILTER	9	39195151	2	WASHER, RUBBER
5	95871828	1	NIPPLE				



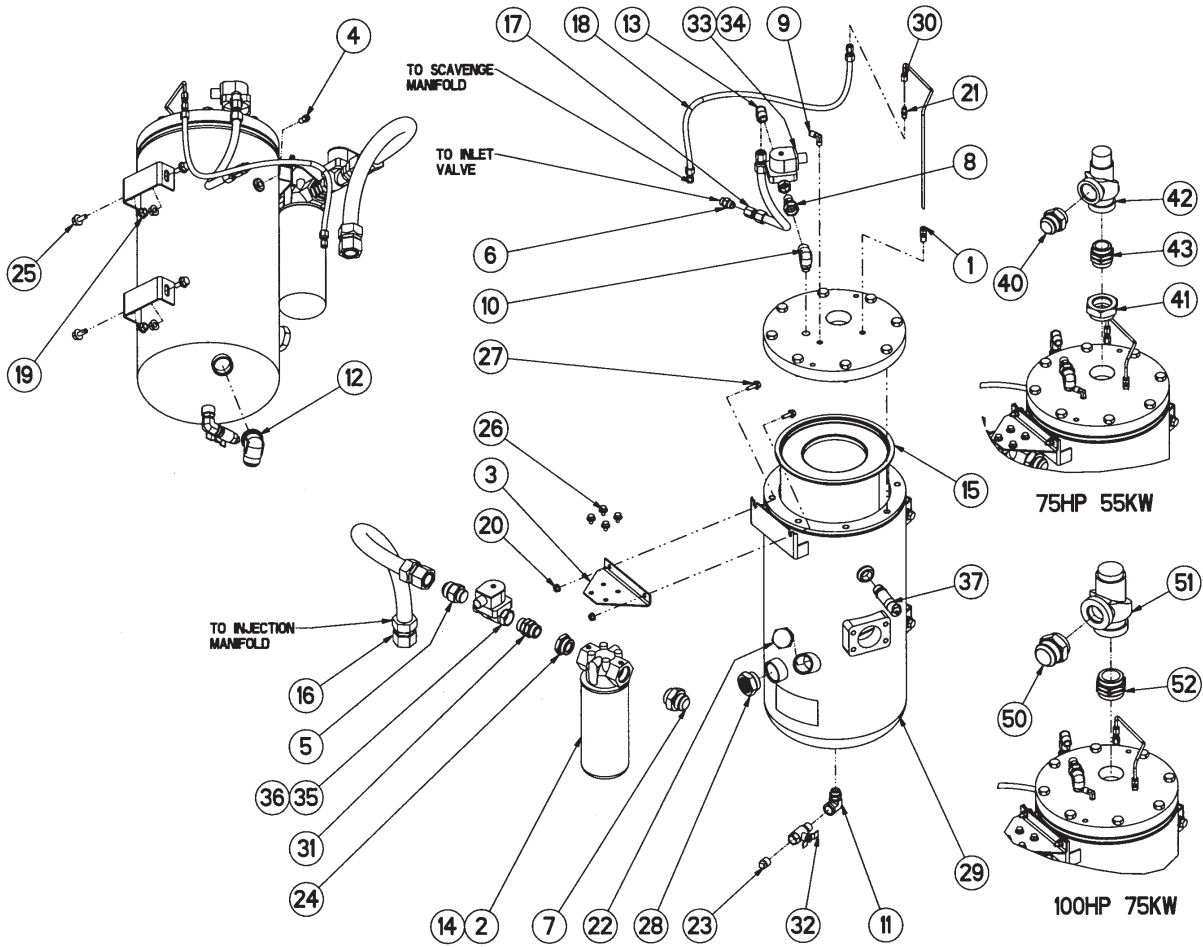
39908025
REV 05

Item	CCN	Qty	Description	Item	CCN	Qty	Description
1	39417118	1	ADAPTER	24	39478953	1	PLUG, OIL FILL
2	39259650	1	ASSEMBLY, OIL FILTER	25	95387361	1	PLUG, SQUARE HEAD
3	85540185	1	BRACKET, OIL FILTER	26	95973368	1	REDUCER / EXPANDER
4	39157425	1	BUSHING, REDUCER	27	39116330	4	SCREW, FLANGE HEAD
5	39111752	1	CONNECTOR	28	39128467	4	SCREW, WHIZ LOCK
6	39128624	1	CONNECTOR	29	39128483	2	SCREW, WHIZ LOCK
7	39128632	1	CONNECTOR	30	39476916	1	SIGHT GLASS
8	39156435	1	CONNECTOR	31	39905310	1	TANK, SEPARATOR (ASME/CRN/AS-1210 TANK)
9	95937488	1	CONNECTOR	33	39906110	1	TUBE, SCAVENGE
10	95938122	1	CONNECTOR	34	39479944	1	UNION
11	95962601	1	CONNECTOR	35	95973350	1	UNION
12	39171517	1	ELBOW	36	39105739	1	VALVE, BALL
13	39308655	1	ELBOW	37	22124085	1	VALVE, BLOWDOWN (NEMA 1)
14	39477526	1	ELBOW	38	22124085	1	VALVE, BLOWDOWN (NEMA 4)
15	95938171	1	ELBOW	39	99289845	1	VALVE, MINIMUM PRESURE, 1.5 INCH
16	39911615	1	ELEMENT		54750369		
17	39895610	1	ELEMENT, SEPARATOR TANK	40	22205462	1	VALVE, OIL STOP (NEMA 1)
18	85558906	1	HOSE, HYDRAULIC	41	22205462	1	VALVE, OIL STOP (NEMA 4)
19	85557726	1	HOSE, HYDRAULIC	42	39587951	1	VALVE, PRESSURE, RELIEF (6CMP 45KW)
20	85560456	1	HOSE, HYDRAULIC STR X STR	43	39587993	1	VALVE, PRESSURE, RELIEF (5CHP 37 KW)
21	39116348	4	NUT, FLANGE				
22	39128566	2	NUT, FLANGE				
23	39301940	1	ORIFICE, SCAVENGE				



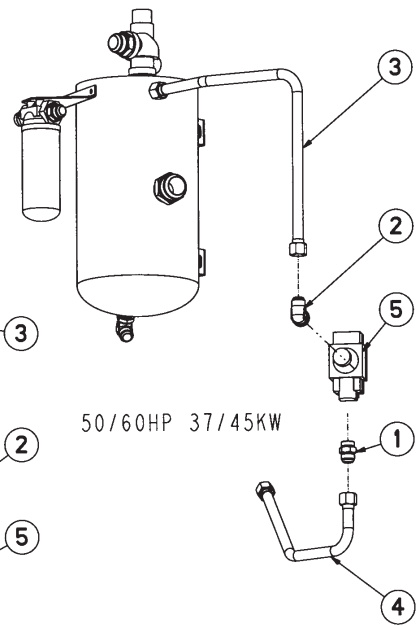
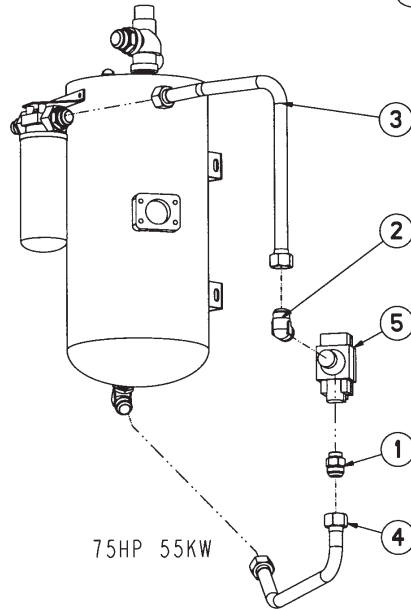
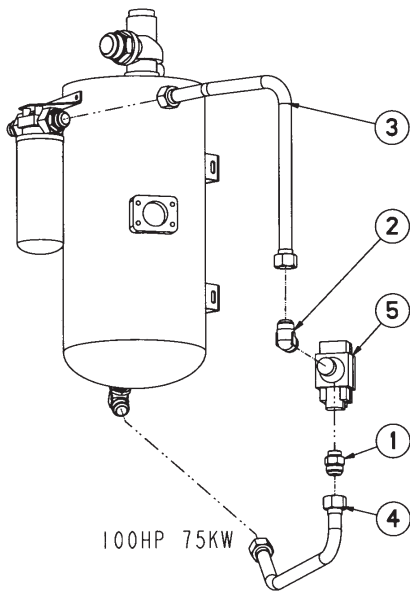
39905195
REV 04

Item	CCN	Qty	Description	Item	CCN	Qty	Description
75/100HP 55/75 KW SEPARATOR TANK							
1	39417118	1	ADAPTER	18	85557726	1	HOSE, HYDRAULIC .50 NOMINAL X 43.00 LONG
2	39259668	1	ASSEMBLY, OIL FILTER 5 INCH SINGLE	19	39116348	4	NUT, FLANGE .50 ZINC PLATED
3	85540110	1	BRACKET, OIL FILTER	20	39128566	2	NUT, FLANGE .38 ZINC PLATED
4	39156435	1	CONNECTOR, .25 NPT X .25 TUBE	21	39303276	1	ORIFICE, SCAVENGE .056
5	39476999	1	CONNECTOR, 1.25 TUBE X .75 SAE	22	39478653	1	PLUG OIL FILL
6	95938122	1	CONNECTOR, .50 TUBE X .75 SAE	23	95387361	1	PLUG, SQUARE HEAD .50 NPT
7	95938155	1	CONNECTOR, 1.25 TUBE X 1.63 SAE	24	95960746	1	REDUCER/EXPANDER, 1.63 SAE X 1.31 FEMALE SAE
8	95961538	1	CONNECTOR, .50 NPT X .75 FEMALE TUBE	25	39116330	4	SCREW, FLANGE HEAD .50 X 1.00 LONG ZINC PLATED
9	39155478	1	ELBOW, .25 NPT X .25 TUBE	26	39128467	4	SCREW, WHIZ LOCK .38 X .50 LONG ZINC PLATED
10	39171517	1	ELBOW, .75 TUBE X .75 SAE	27	39128483	2	SCREW, WHIZ LOCK .38 X 1.00 LONG ZINC PLATED
11	39477526	1	ELBOW, .50 NPT X .88 SAE	28	39476916	1	SIGHT GLASS
12	95938189	1	ELBOW, 1.25 TUBE X 1.63 SAE	29	39905302	1	TANK, SEPARATOR 14 INCH (ASME/CRN/AS-1210)
13	95942025	1	ELBOW, .50 TUBE X .50 NPT	30	39895578	1	TUBE, SCAVENGE 75-100 HP
14	39911631	1	ELEMENT, OIL FILTER	31	95937106	1	UNION 1.31 SAE
15	39894597	1	ELEMENT, SEPARATOR TANK 14 INCH	32	39105739	1	VALVE, BALL
16	85561769	1	HOSE, HYDRAULIC 1.25 NOMINAL X 33.00 LONG	33	54654652	1	VALVE, BLOWDOWN .50 NPT (NEMA 1)
17	85558872	1	HOSE, HYDRAULIC .50 NOMINAL X 16.50 LONG				



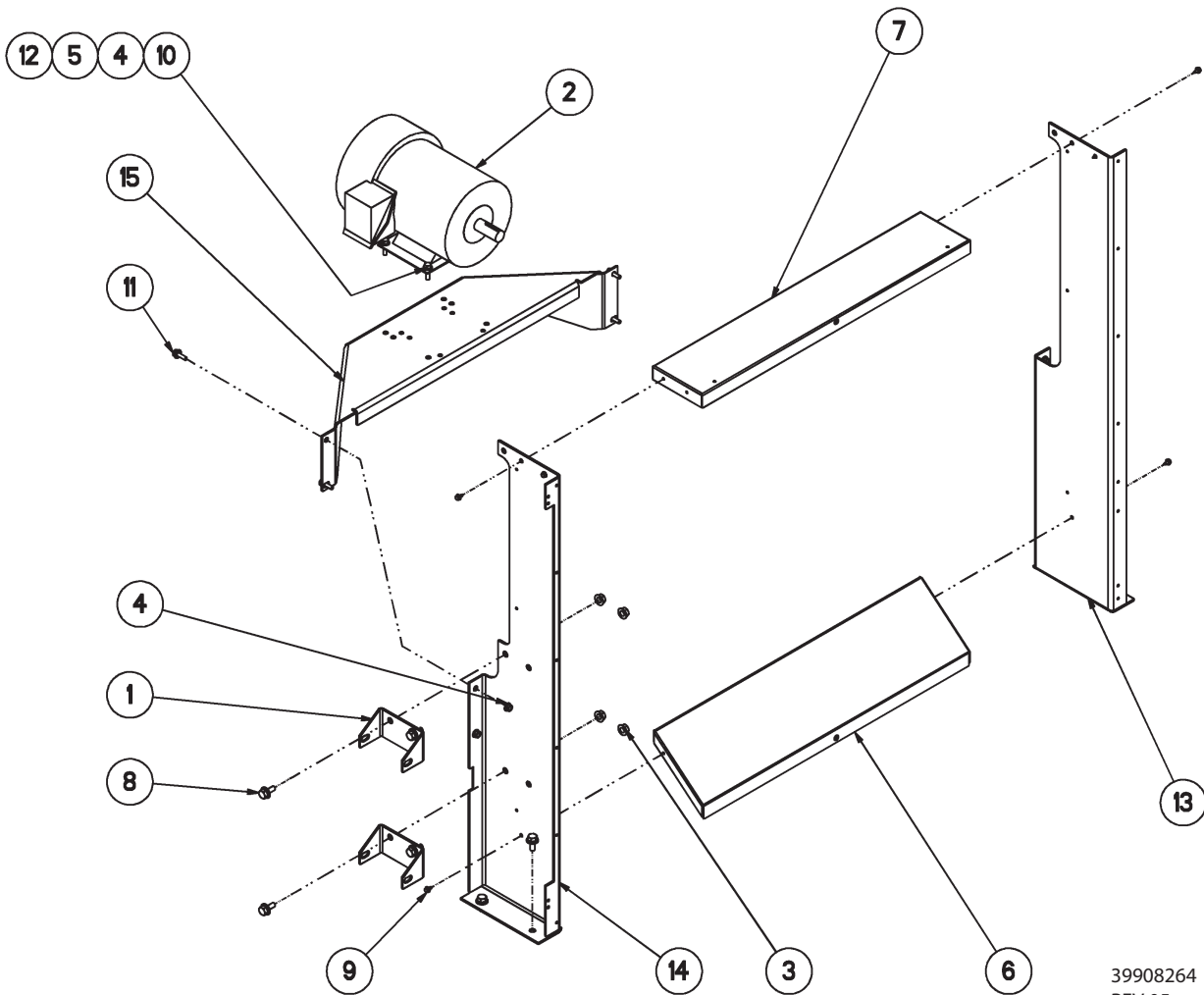
39905195
REV 04

Item	CCN	Qty	Description	Item	CCN	Qty	Description
34	54654652	1	VALVE, BLOWDOWN .50 NPT (NEMA 4)	100HP 75KW SEPARATOR TANK			
35	22205462	1	VALVE, OIL STOP 1.31 SAE (NEMA 1)	50	39128632	1	CONNECTOR, 2.00 TUBE X 2.50 SAE
36	22205462	1	VALVE, OIL STOP 1.31 SAE (NEMA 4)	51	99289852	1	VALVE, MINIMUM PRESSURE, CHECK 2.00 INCH
37	39588116	1	VALVE, PRESSURE RELIEF	52	39477039	1	UNION, 2.50 SAE
75HP 55KW SEPARATOR TANK							
40	39128624	1	CONNECTOR, 1.50 TUBE X 1.88 SAE				
41	39324629	1	REDUCER/EXPANDER, 2.50 SAE X 1.88 FEMALE SAE				
42	99289845	1	VALVE, MINIMUM PRESSURE, CHECK 1.50 INCH				
43	39479944	1	UNION, 1.88 SAE				



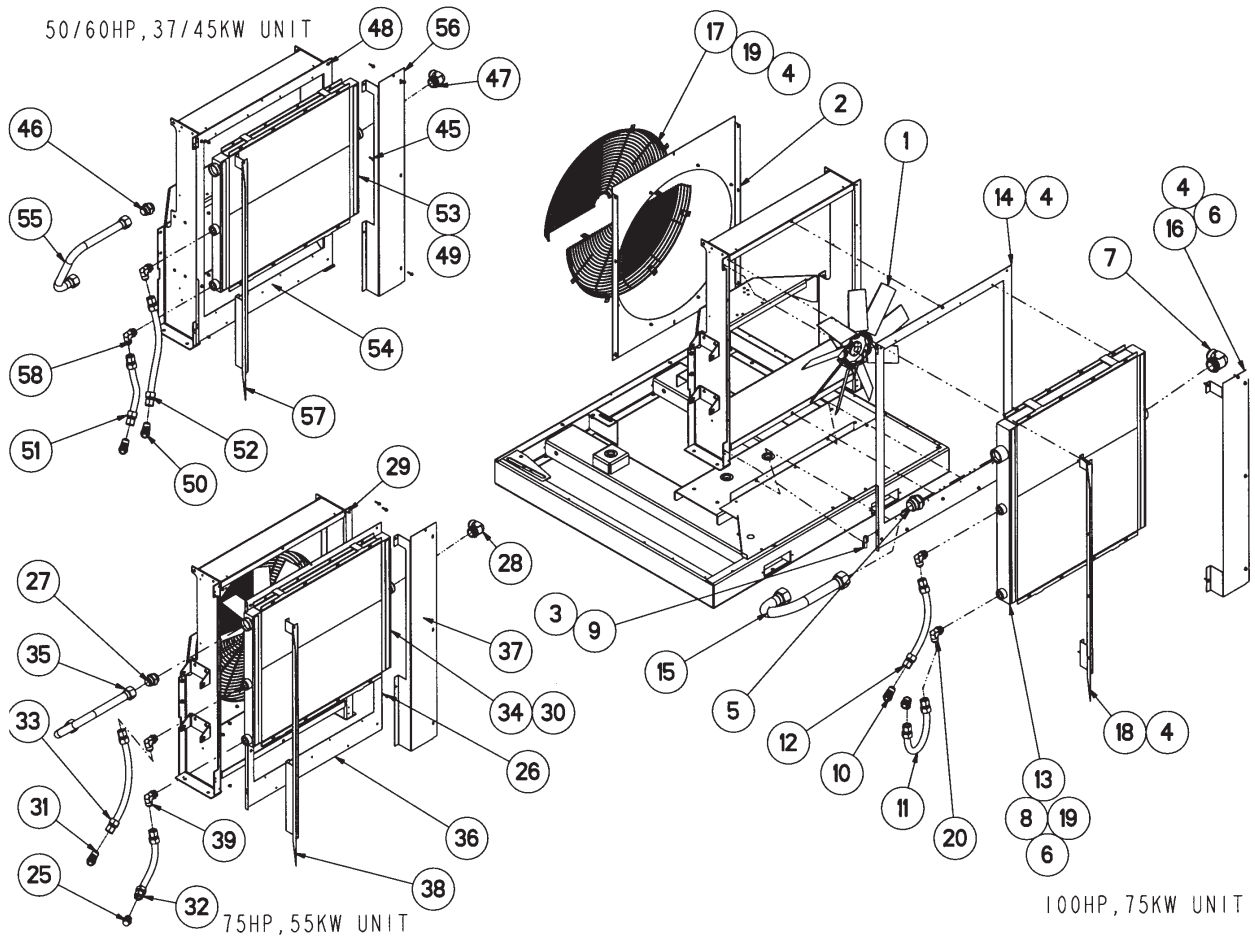
39900402
REV 05

Item	CCN	Qty	Description	Item	CCN	Qty	Description
100 HP 75 KW TEMPERATURE CONTROL VALVE AND PIPING				75 HP 55KW TEMPERATURE CONTROL VALVE AND PIPING			
1	39476999	1	CONNECTOR, 1.25 TUBE X 1.31 SAE	1	39476999	1	CONNECTOR, 1.25 TUBE X 1.31 SAE
2	39476973	1	ELBOW, 1.25 TUBE X 1.31 TUBE	2	39476973	1	ELBOW, 1.25 TUBE X 1.31 SAE
3	39893581	1	TUBE, THERMAL VALVE	3	39893581	1	TUBE, THERMAL VALVE
4	39900345	1	TUBE, THERMAL VALVE TO TANK	4	39900345	1	TUBE, THERMAL VALVE TO TANK
5	54702212	1	VALVE, OIL TEMP BYPASS				
50/60 HP 37/45 KW TEMPERATURE CONTROL VALVE AND PIPING							
1	39111752	1	CONNECTOR, 1.00 TUBE X 1.31 SAE				
2	95938171	1	ELBOW, 1.00 TUBE X 1.31 SAE				
3	39900170	1	TUBE, THERMAL VALVE				
4	39900352	1	TUBE, THERMAL VALVE TO TANK				
5	54702212	1	VALVE, OIL TEMP BYPASS				



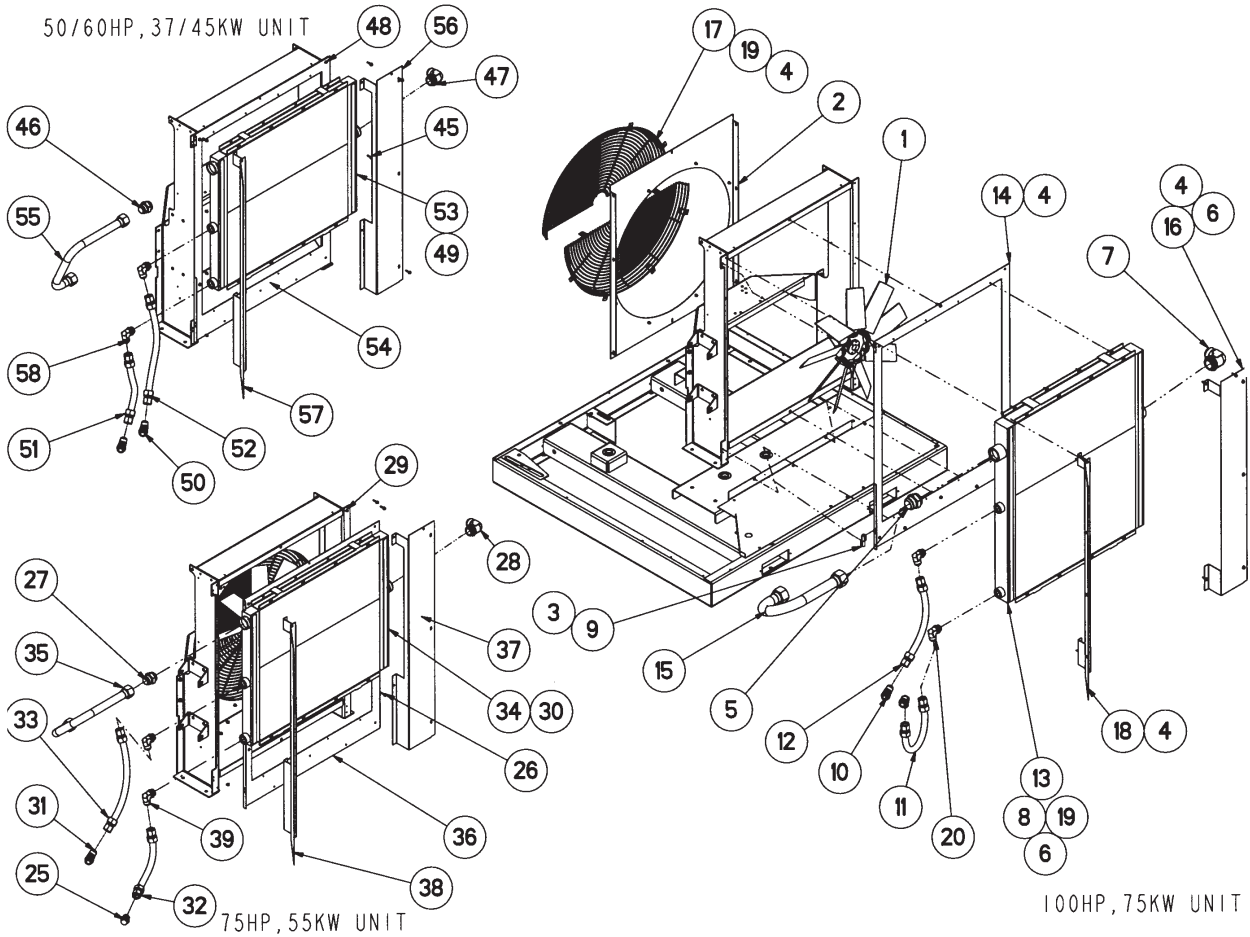
39908264
REV 05

Item	CCN	Qty	Description	Item	CCN	Qty	Description
1	85540151	2	BRACKET, SEPARATOR TANK	10	39110309	4	SCREW, WHIZ LOCK .38 X 1.25 LONG ZINC PLATED (USE QTY OF 4 IF AIR COOLED MOTOR)
2	-	1	MOTOR, FAN (REFER TO DATA PLATE FOR MOTOR P/N)	11	39128483	4	SCREW, WHIZ LOCK .38 X 1.00 LONG ZINC PLATED
3	39116348	4	NUT, FLANGE .50 ZINC PLATED	12	39130828	4	SCREW, WHIZ LOCK .31 X 1.00 LONG ZINC PLATED (IF WATER COOLED MOTOR)
4	39128566	4	NUT, FLANGE .38 ZINC PLATED	13	85540342	1	SUPPORT, COOLER LEFT VERTICAL
5	39128558	4	NUT, WHIZ LOCK .31 ZINC PLATED	14	85540359	1	SUPPORT, COOLER RIGHT VERTICAL
6	85540094	1	PANEL, BOTTOM	15	85540854	1	SUPPORT, FAN MOTOR
7	85540086	1	PANEL, TOP				
8	39116330	8	SCREW, FLANGE HEAD .50 HEAD X 1.00 LONG ZINC PLATED				
9	39133145	6	SCREW, WASHER HEAD TAPPING .25 X .50 LONG ZINC PLATED				



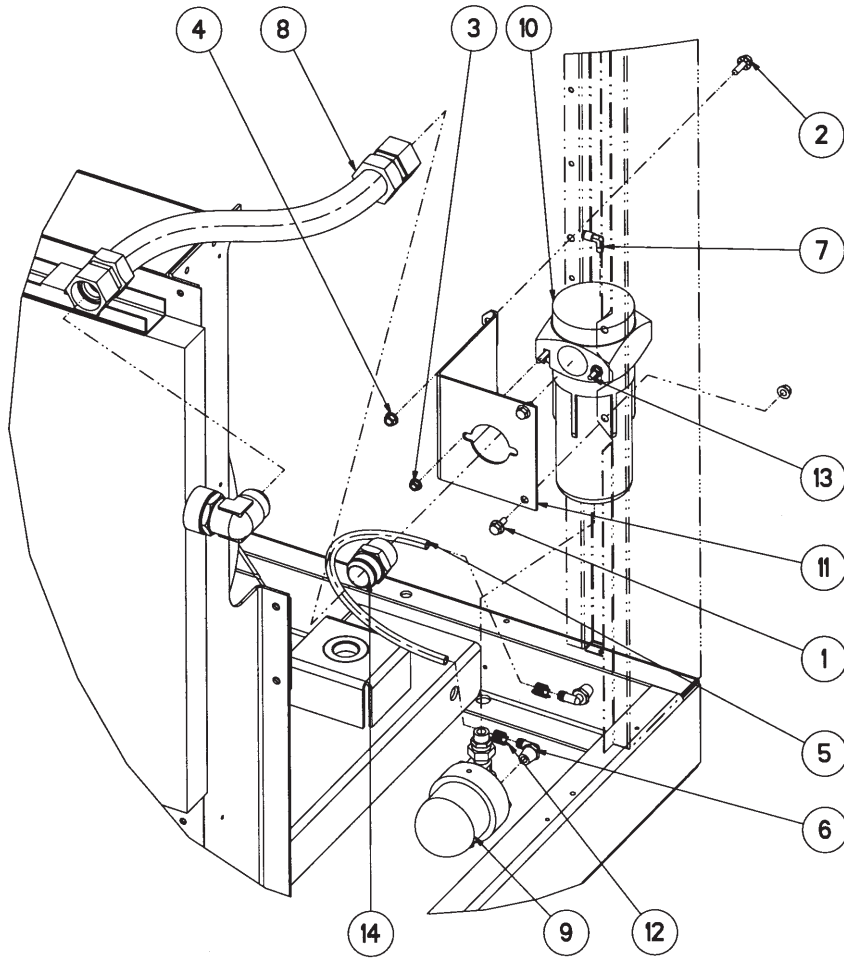
39902937
REV 06

Item	CCN	Qty	Description	Item	CCN	Qty	Description
100 HP, 75 KW AIR COOLED COOLER				75 HP, 55 KW AIR COOLED COOLER			
1	-	1	FAN (SEE FAN ORIFICE CHART)	18	85540599	1	WALL, LEFT PLENUM
2	-	1	ORIFICE, FAN (SEE FAN ORIFICE CHART)	19	95929071	8	WASHER, PLAIN WIDE TYPE B .25ZINC
3	39111471	8	SCREW, FLANGE HEAD 10 X .38 LONG ZINC PLATED	20	95938171	3	ELBOW, 1.00 TUBE X 1.31 SAE
4	39128434	11	SCREW, WHIZ LOCK .25 X 1.00 LONG ZINC PLATED	25	39111752	1	CONNECTOR, 1.00 TUBE X 1.31 SAE
5	39128632	1	CONNECTOR, 2.00 TUBE X 2.50 SAE	26	39128434	7	SCREW, WHIZ LOCK .25 X 1.00 LONG ZINC PLATED
6	39133152	10	SCREW, WASHER HEAD TAPPING .25 X 1.00 LONG	27	39128624	1	CONNECTOR, 1.50 TUBE X 1.88 SAE
7	39140512	1	ELBOW, 2.00 TUBE X 2.50 SAE	28	39128673	1	ELBOW, 1.50 TUBE X 1.88 SAE
8	39249651	-	GASKET, SILICONE	29	39133152	2	SCREW, WASHER HEAD TAPPING .25 X 1.00 LONG
9	39323563	2	HINGE	30	39249651	-	GASKET, SILICONE
10	39477021	1	ELBOW, 45° 1.00 TUBE X 1.31 SAE	31	39477021	1	ELBOW, 45° 1.00 TUBE X 1.31 SAE
11	39572086	1	HOSE, HYDRAULIC 1.00 NOMINAL X 20.50 LONG	32	39577176	1	HOSE, HYDRAULIC 1.00 NOMINAL X 16.50 LONG
12	39572896	1	HOSE, HYDRAULIC 1.00 NOMINAL X 19.00 LONG	33	39588884	1	HOSE, HYDRAULIC 1.00 NOMINAL X 22.00 LONG
13	39892492	1	COOLER, OIL/AIR	34	39893003	1	COOLER, OIL/AIR
14	85540102	1	PANEL, COOLER	35	39896147	1	TUBE, MINIMUM PRESSURE TO AFTERCOOLER
15	39893359	1	TUBE, MINIMUM PRESSURE TO AFTERCOOLER	36	85540193	1	PANEL, COOLER
16	85540268	1	WALL, RIGHT PLENUM	37	85540276	1	WALL, RIGHT PLENUM
17	39905716	2	GUARD, FAN	38	85540581	1	WALL, LEFT PLENUM
				39	95938171	2	ELBOW, 1.00 TUBE X 1.31 SAE



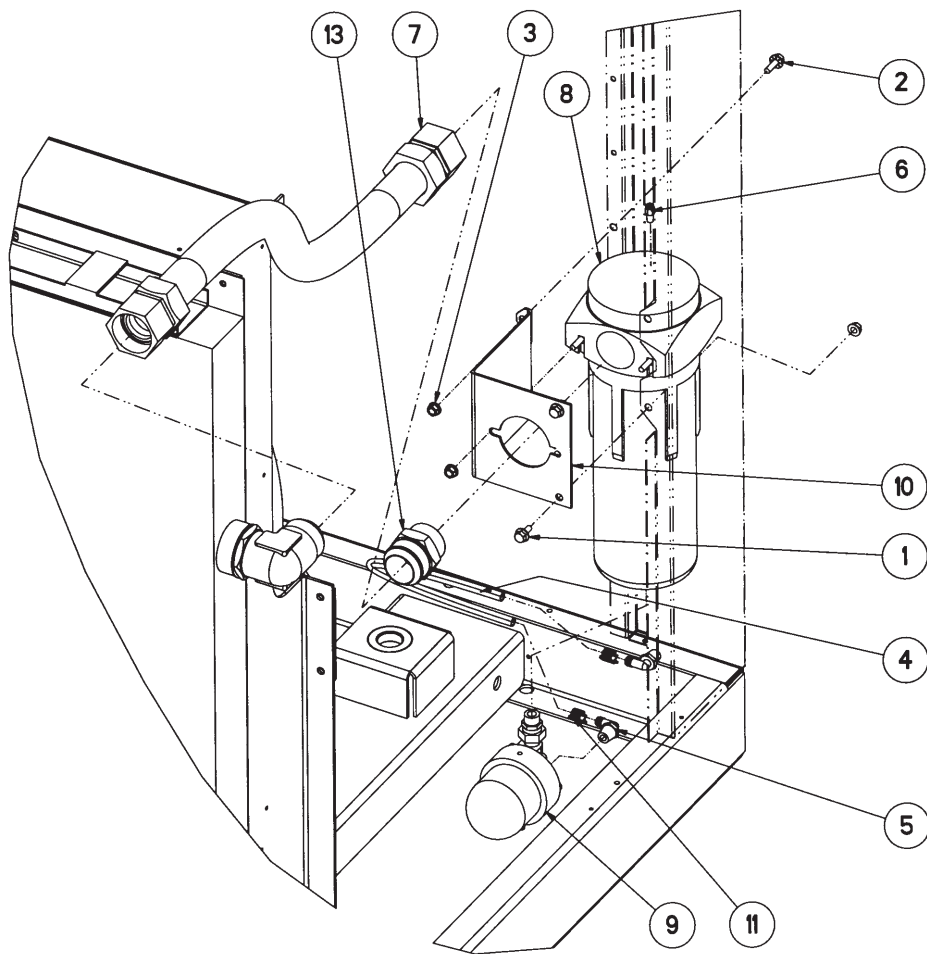
39902937
REV 06

Item	CCN	Qty	Description	Item	CCN	Qty	Description
50/60 HP, 37/45 KW AIR COOLED COOLER				FAN/ORIFICE CHART			
45	39128434	7	SCREW, WHIZ LOCK .25 X 1.00 LONG ZINC PLATED	ORIFICE AND FAN FOR 50-60HP			
46	39128624	1	CONNECTOR, 1.50 TUBE X 1.88 SAE	1	39922000	1	FAN, 28 INCH, 1.125 INCH BUSHING 28-9-4ZL-20.0 SPLIT TAPER
47	39128673	1	ELBOW, 1.50 TUBE X 1.88 SAE	2	85540367	1	ORIFICE, FAN 28 INCH
48	39133152	2	SCREW, WASHER HEAD TAPPING .25 X 1.00 LONG	ORIFICE AND FAN FOR 75HP			
49	39249651	-	GASKET, SILICONE	1	39921986	1	FAN, 28 INCH, 1.125 INCH BUSHING 28-9-4ZL-30.0 SPLIT TAPER
50	39477021	2	ELBOW, 45° 1.00 TUBE X 1.31 SAE	2	85540367	1	ORIFICE, FAN 28 INCH
51	39572755	1	HOSE, HYDRAULIC 1.00 NOMINAL X 14.75 LONG	ORIFICE AND FAN FOR 100HP			
52	39589528	1	HOSE, HYDRAULIC 1.00 NOMINAL X 23.50 LONG	1	39921978	1	FAN, 28 INCH, 1.125 INCH BUSHING 28-9-4ZL-32.5 SPLIT TAPER
53	39893003	1	COOLER, OIL/AIR	2	85540367	1	ORIFICE, FAN 28 INCH
54	85540193	1	PANEL, COOLER	ORIFICE AND FAN FOR 37/75KW			
55	39900212	1	TUBE, MINIMUM PRESSURE TO AFTERCOOLER	1	54427653	1	FAN, 28 INCH, 28MM BUSHING 28-12-4ZL-32.5 SPLIT TAPER
56	85540276	1	WALL, RIGHT PLENUM	2	85540367	1	ORIFICE, FAN 28 INCH
57	85540581	1	WALL, LEFT PLENUM	ORIFICE AND FAN FOR 55/75KW			
58	95938171	2	ELBOW, 1.00 TUBE X 1.31 SAE	1	54427646	1	FAN, 32 INCH, 28MM BUSHING 32-12-5ZL-32.5 SPLIT TAPER
				2	85540375	1	ORIFICE, FAN 32 INCH



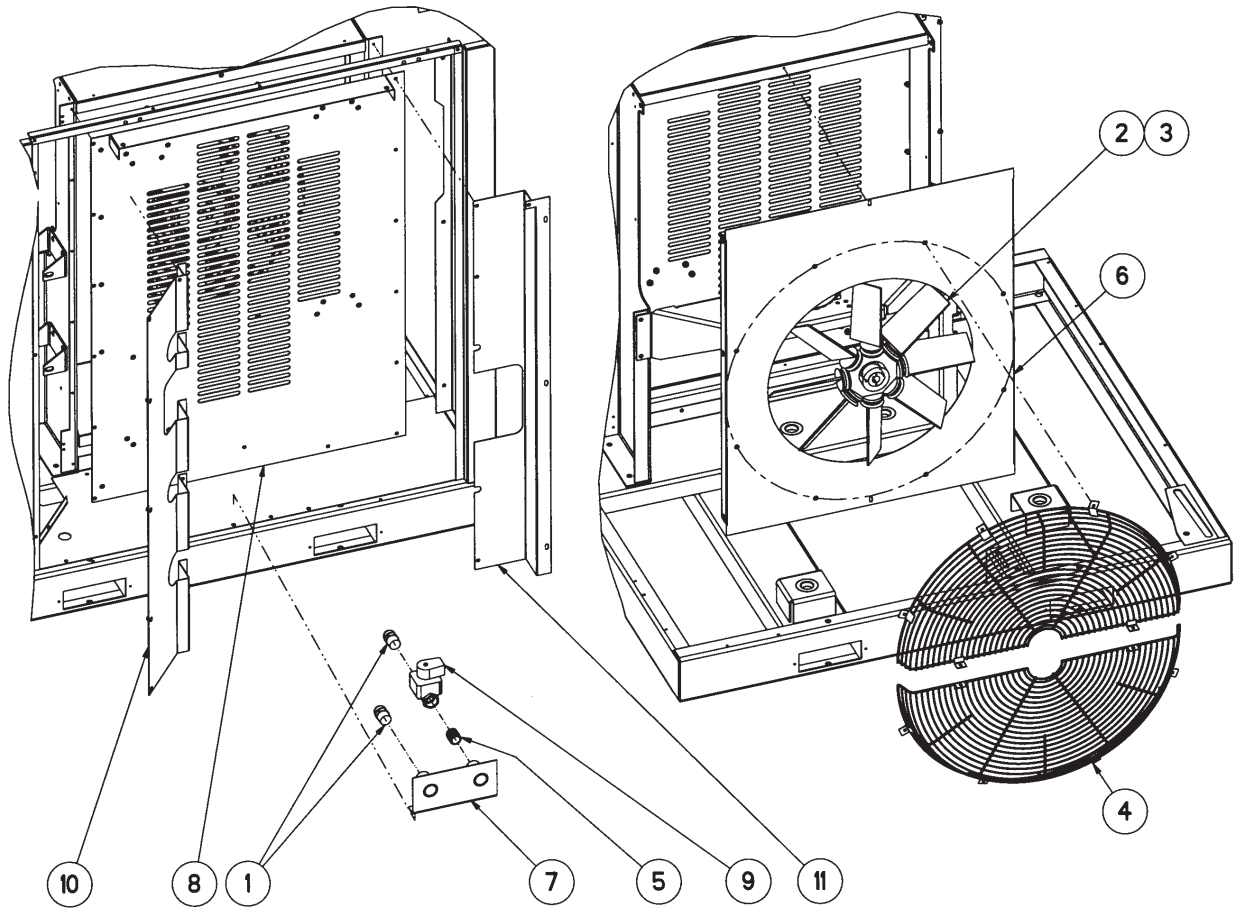
39920814
REV C

Item	CCN	Qty	Description	Item	CCN	Qty	Description
1	39128475	2	SCREW, FLANGE HEAD .38 X .75 LONG ZINC PLATED	8	39573100	1	HOSE, HYDRAULIC 1.50 NOMINAL X 41.75 LONG
2	39128483	2	SCREW, WHIZ LOCK .38 X 1.00 LONG ZINC PLATED	9	39586672	1	TRAP, CONDENSATE
3	39128558	2	NUT, WHIZ LOCK .31 ZINC PLATED	10	39906334	1	SEPARATOR, MOISTURE
4	39128566	4	NUT, FLANGE .38 ZINC PLATED	11	85540748	1	BRACKET, MOISTURE SEPARATOR 1.50 INCH
5	39137518	1	HOSE, SYSNFLEX 18.00 LONG	12	95220844	2	CLAMP, HOSE
6	39137534	2	ELBOW, BARBED .50 NPT X .50 TUBE ID	13	95929006	2	SCREW, WHIZ LOCK .31 X 1.00 LONG
7	39155577	1	ELBOW, .13 NPT X .25 TUBE	14	95937553	1	CONNECTOR, 1.50 TUBE X 1.50 NPT



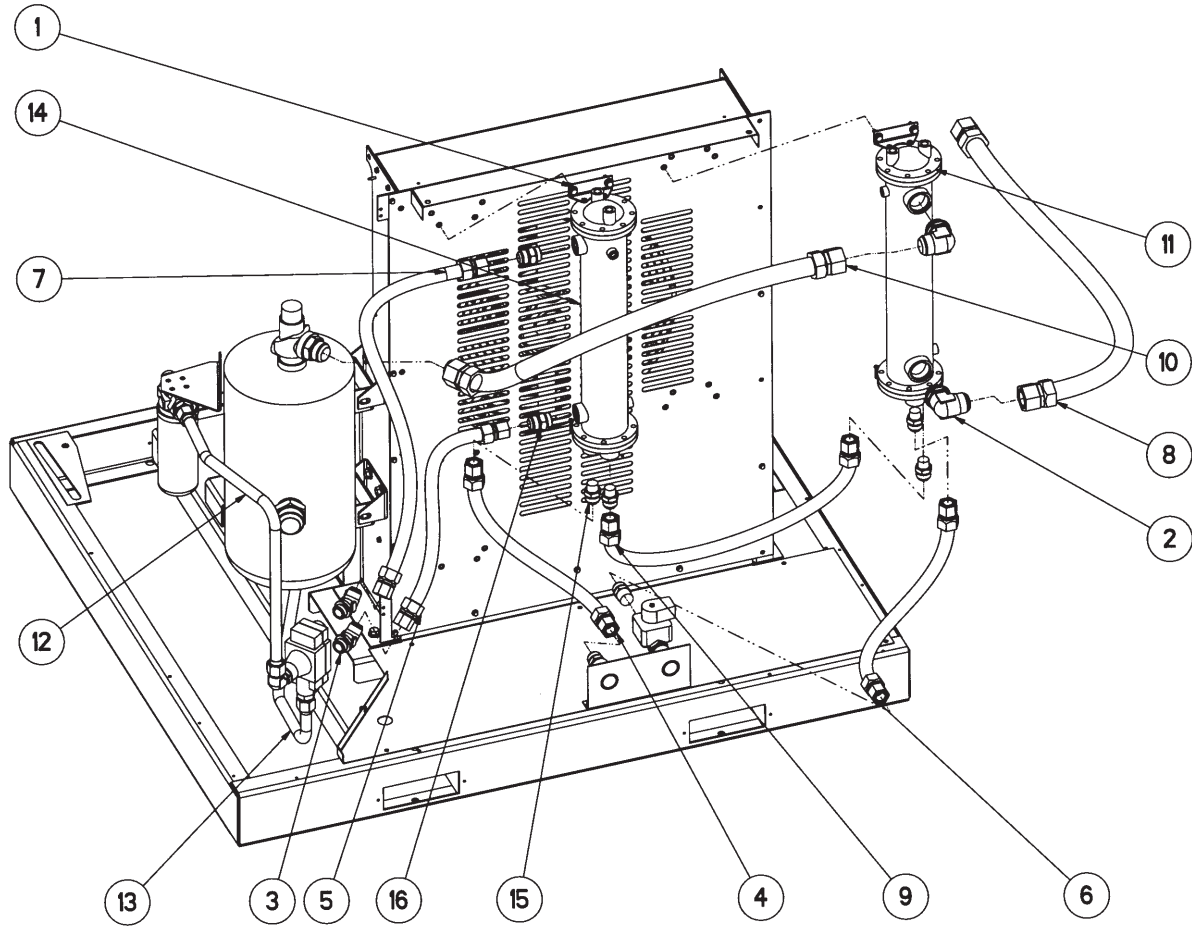
39920822
REV C

Item	CCN	Qty	Description	Item	CCN	Qty	Description
1	39128475	2	SCREW, FLANGE HEAD .38 X .75 LONG ZINC PLATED	7	39572219	1	HOSE, HYDRAULIC 2.00 NOMINAL X 38.00 LONG
2	39128483	2	SCREW, WHIZ LOCK .38 X 1.00 LONG ZINC PLATED	8	39586292	1	SEPARATOR, MOISTURE
3	39128566	6	NUT, FLANGE .38 ZINC PLATED	9	39586672	1	TRAP, CONDENSATE
4	39137518	1	HOSE, SYN FLEX 18.00 LONG	10	85540714	1	BRACKET, MOISTURE SEPARATE 2.00 INCH
5	39137534	2	ELBOW, BARBED .50 NPT X .50 TUBE ID	11	95220844	2	CLAMP, HOSE
6	39156393	1	CONNECTOR, .13 NPT X .25 TUBE	12	95920674	2	SCREW, HEX HEAD .38 X 1.00 LONG
				13	95937561	1	CONNECTOR, 2.00 TUBE X 2.00 NPT



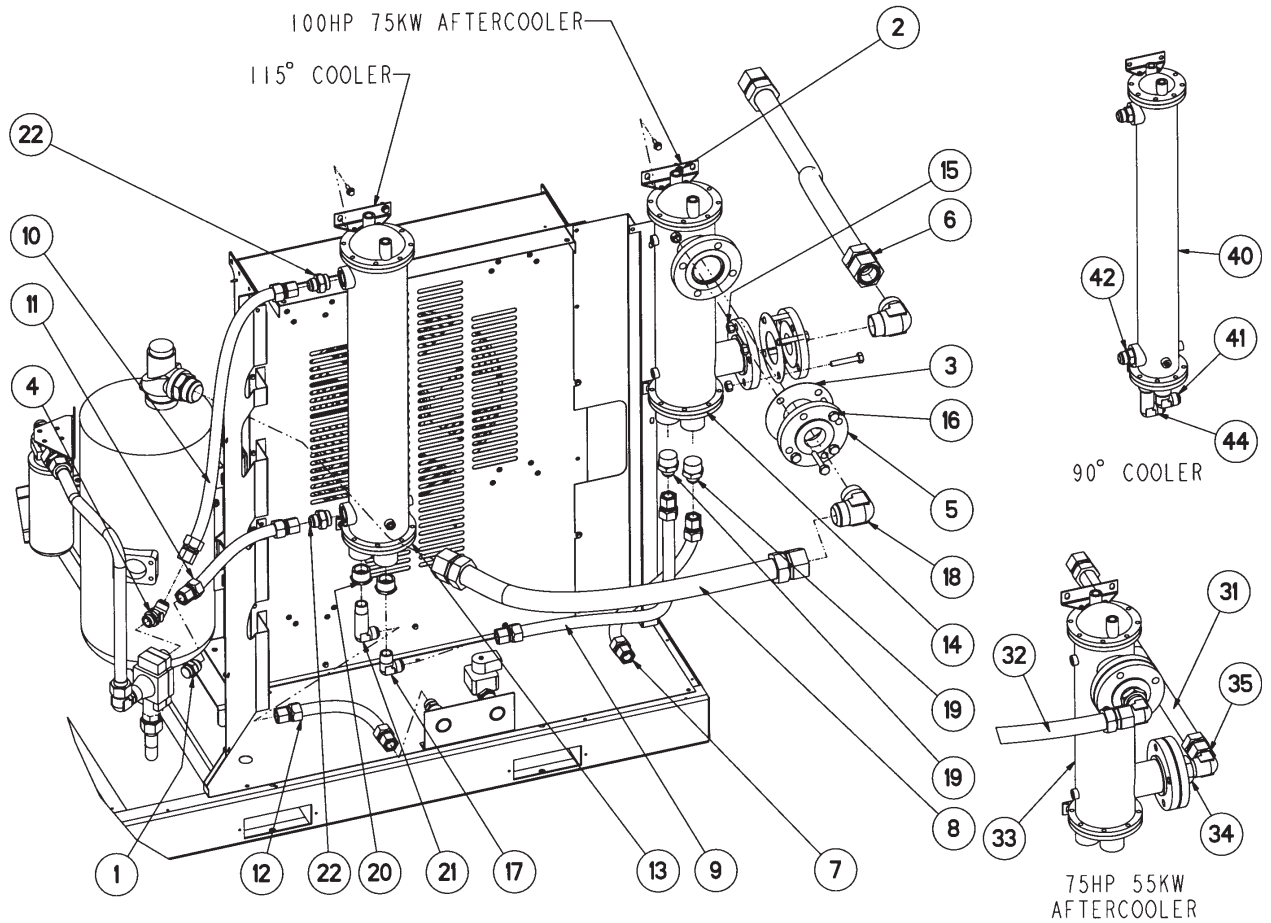
39908488
REV 04

Item	CCN	Qty	Description	Item	CCN	Qty	Description
1	95937520	2	CONNECTOR, 1.00 TUBE X 1.00 NPT	7	85540250	1	PANEL, COUPLINGS WATER CONNECTIONS
2	39197835	1	FAN 24 INCH, .875 INCH BUSHING 24-8-3L-PP-45A SPLIT TAPE R1 00 HP UNITS	8	85540326	1	SUPPORT AND FAN GUARD COOLERS W/C
3	54430129	1	FAN 24 INCH, 24MM BUSHING 24-8-3L-PAG-45-A SPLIT TAPE R37-75 KW UNITS	9	39479803	1	VALVE, WATER SHUT OFF DIN 1.00 NPT
4	39905716	2	GUARD, FAN	10	85540573	1	WALL, LEFT PLENUM WATER COOLED
5	95946117	1	NIPPLE, 1.00 NPT X 1.50 LONG ZINC	11	85540383	1	WALL, RIGHT PLENUM WATER COOLED
6	85540318	1	ORIFICE, FAN 24 INCH				



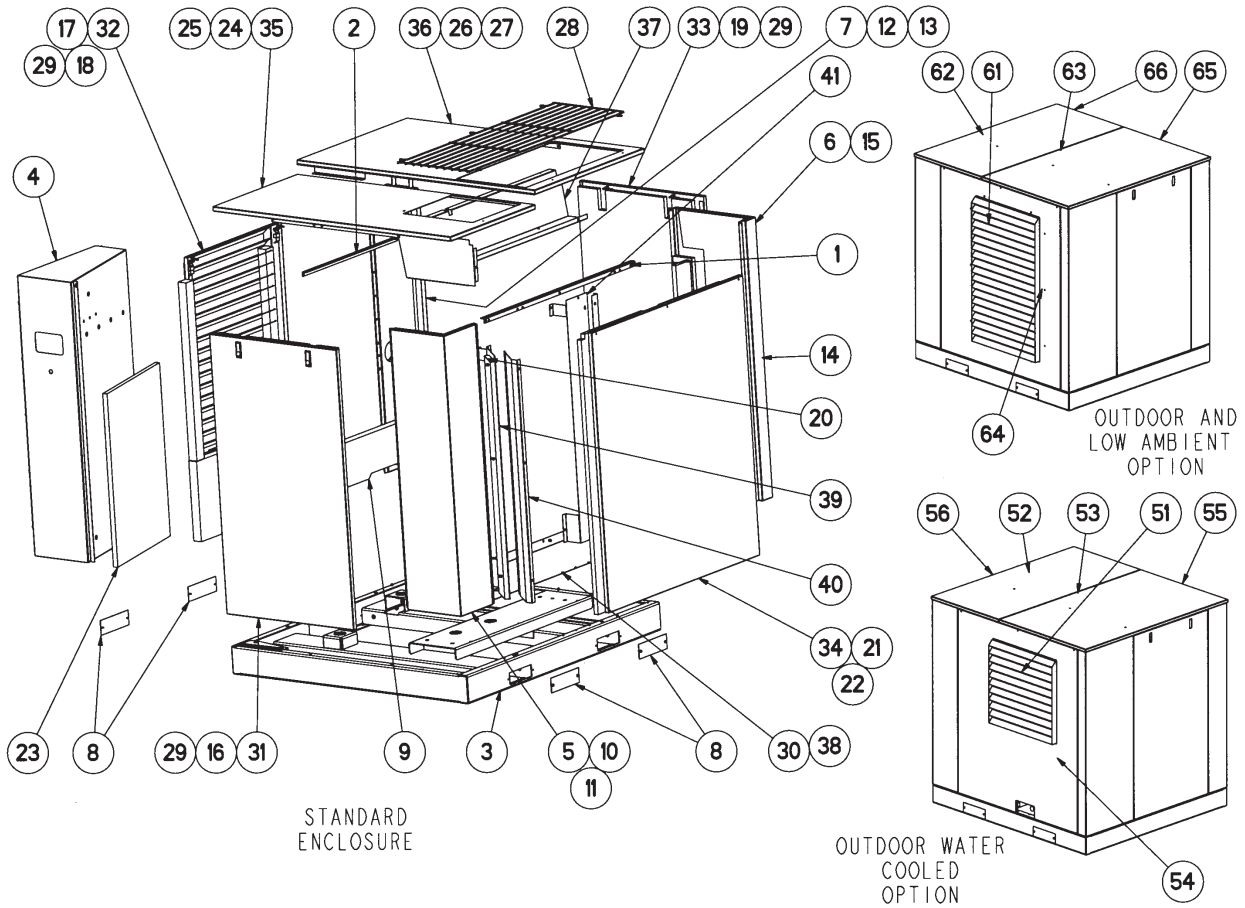
39908538
REV 06

Item	CCN	Qty	Description	Item	CCN	Qty	Description
1	39128483	8	SCREW, WHIZ LOCK .38 X 1.00 LONG ZINC PLATED	9	39572508	1	HOSE, HYDRAULIC 1.00 NOMINAL X 45.00 LONG
2	39128673	2	ELBOW, 1.50 TUBE X 1.88 SAE	10	39573100	1	HOSE, HYDRAULIC 1.00 NOMINAL X 41.75 LONG
3	39477021	2	ELBOW, 45° 1.00 TUBE X 1.31 SAE	11	39796644	1	AFTERCOOLER
4	39572243	1	HOSE, HYDRAULIC 1.00 NOMINAL X 25.00 LONG	12	39900170	1	TUBE, THERMAL VALVE
5	39572243	1	HOSE, HYDRAULIC 1.00 NOMINAL X 25.00 LONG	13	39900352	1	TUBE, THERMAL VALVE TO TANK
6	39572243	1	HOSE, HYDRAULIC 1.00 NOMINAL X 25.00 LONG	14	39900550	1	COOLER, OIL 90 & 115F WATERCOOLED (4024)
7	39572433	1	HOSE, HYDRAULIC 1.00 NOMINAL X 38.00 LONG	15	95937538	4	CONNECTOR, 1.00 TUBE X .75 NPT
8	39572482	1	HOSE, HYDRAULIC 1.00 NOMINAL X 49.00 LONG	16	95938148	2	CONNECTOR, 1.00 TUBE X 1.31 SAE



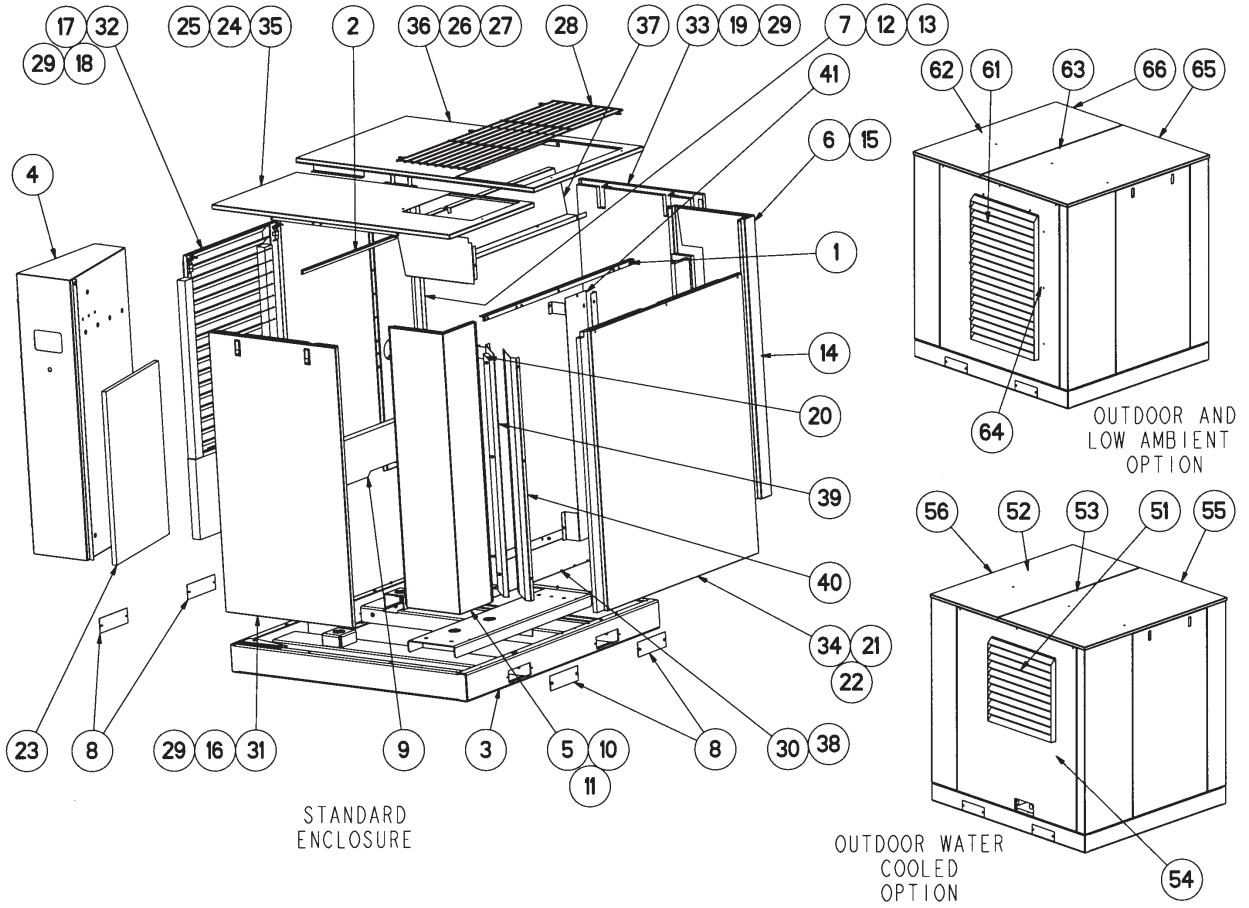
39908470
REV 06

Item	CCN	Qty	Description	Item	CCN	Qty	Description
1	39111752	1	CONNECTOR, 1.00 TUBE X 1.31 SAE	17	95937645	1	ELBOW, 1.00 TUBE X 1.00 NPT
2	39128483	8	SCREW, WHIZ LOCK, ZINC PLATED	18	95937678	2	ELBOW, 2.00 TUBE X 2.00 NPT
3	39454525	2	GASKET FLANGE	19	95939336	2	CONNECTOR, 1.00 TUBE X 1.50 NPT
4	39477021	1	ELBOW, 45° 1.00 TUBE X 1.31 SAE	20	95941043	2	BUSHING, REDUCER 1.50 NPT X 1.00 NPT
5	39479845	2	FLANGE, THREADED REDUCING 3.00 X 2.00 150LB, STEEL	21	95950002	1	ELBOW, EXTRA LONG 1.00 TUBE X 1.00 NPT
6	39572219	1	HOSE, HYDRAULIC 2.00 NOMINAL X 38.00 LONG	22	95974291	2	CONNECTOR, 1.00 TUBE X 1.63 SAE
7	39572243	1	HOSE, HYDRAULIC 1.00 NOMINAL X 25.00 LONG	75HP 55KW AFTERCOOLER			
8	39572276	1	HOSE, HYDRAULIC 2.00 NOMINAL X 41.50 LONG	31	39572383	1	HOSE, HYDRAULIC 1.50 NOMINAL X 38.0 LONG
9	39572375	1	HOSE, HYDRAULIC 1.00 NOMINAL X 33.00 LONG	32	39573100	1	HOSE, HYDRAULIC 1.50 NOMINAL X 41.75 LONG
10	39572433	1	HOSE, HYDRAULIC 1.00 NOMINAL X 38.00 LONG	33	39900543	1	AFTERCOOLER, 90° & 115° F (6024) WATER COOLED
11	39572755	1	HOSE	34	95937462	2	BUSHING, REDUCER 2.00 NPT X 1.50 NPT
12	39577176	1	HOSE, HYDRAULIC 1.00 NOMINAL X 16.50 LONG	35	95949749	2	ELBOW, 1.50 TUBE X 1.50 NPT
13	39900527	1	COOLER, OIL 115 F WATER COOLED (6036)	90° COOLER			
14	39900543	1	AFTERCOOLER, 90° & 115° F (6024) WATER COOLED	40	39900535	1	COOLER, OIL 90°F WATER COOLED (4036)
15	95923355	8	NUT, HEX .63	41	95937652	1	ELBOW, 1.00 TUBE X .75 NPT
16	95934170	8	SCREW, HEX HEAD .63 & 3.00 LONG ZINC	42	95938148	2	CONNECTOR, 1.00 TUBE X 1.31 SAE
				44	95972980	1	ELBOW, EXTRA LONG 1.00 TUBE X .75 NPT



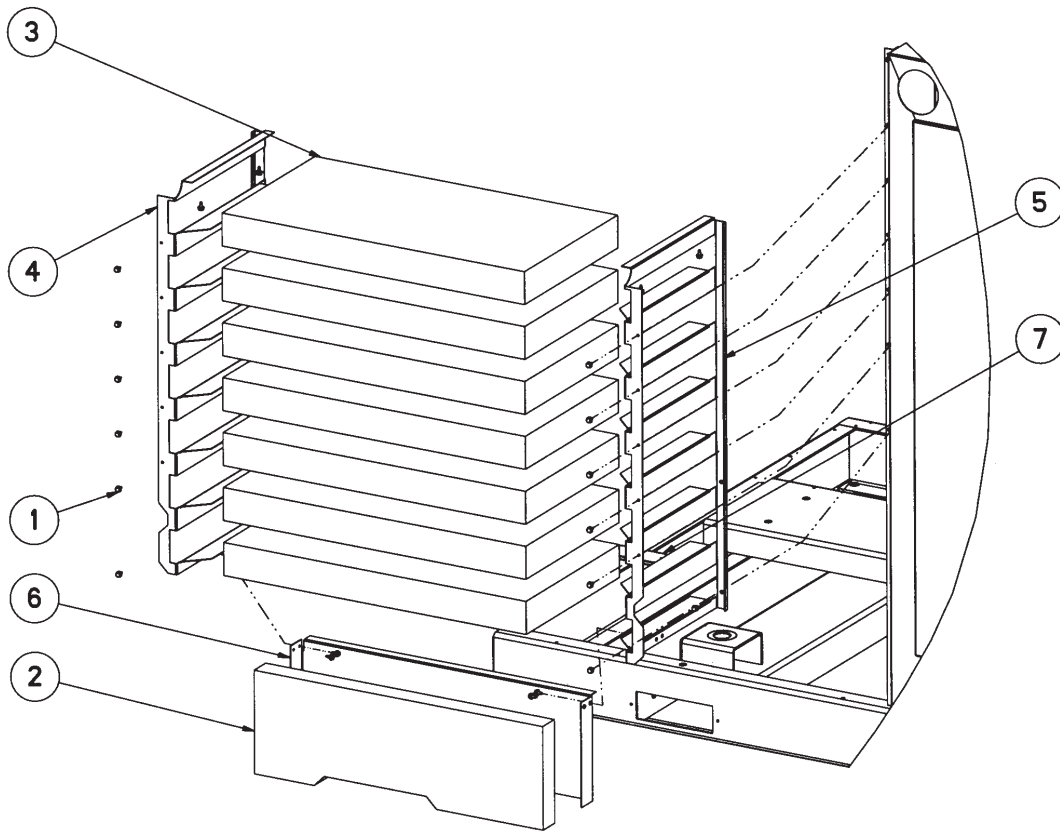
39920848
REV C

Item	CCN	Qty	Description	Item	CCN	Qty	Description
STANDARD ENCLOSURE							
1	85540458	1	ANGLE, EXHAUST	17	39897194	1	FOAM, INTAKE PANEL (BOTTOM) (OPTIONAL)
2	85540128	1	ANGLE, INTAKE	18	39902580	2	FOAM, INTAKE PANEL (TOP) (OPTIONAL)
3	54415229	1	BASE, UNIT COUGAR	19	39918578	1	FOAM, LEFT AND REAR
4	85540144	1	BOX, STARTER	20	39902622	1	FOAM, LEFT PLENUM WALL (OPTIONAL)
5	85540060	1	CORNER, FRONT	21	39261730	2	FOAM, RIGHT PANEL
6	85540672	1	CORNER, REAR	22	39902630	2	FOAM, RIGHT PLENUM WALL
7	85540680	1	CORNER, REAR (MOISTURE SEPARATOR)	23	39902770	1	FOAM, STARTER BOX
8	39480470	4	COVER, FORKLIFT COVER	24	39261755	1	FOAM, TOP FRONT (LEFT)
9	39589304	1	FOAM, 2 INCH 75DB INTAKE BATTERY	25	39897178	1	FOAM, TOP FRONT (RIGHT) (OPTIONAL)
10	39897129	1	FOAM, CORNER FRONT (FRONT SIDE) (OPTIONAL)	26	39261748	1	FOAM, TOP REAR (RIGHT)
11	39897145	1	FOAM, CORNER FRONT (RIGHT SIDE) (OPTIONAL)	27	39905963	1	FOAM, TOP REAR (LEFT SIDE) (OPTIONAL)
12	39905781	1	FOAM, CORNER MOISTURE SEPARATOR (BACK) (OPTIONAL)	28	39133954	1	GRILL, EXHAUST
13	39897137	1	FOAM, CORNER REAR (LEFT SIDE) (OPTIONAL)	29	39133954	6	LATCH, DOOR
14	39902523	1	FOAM, CORNER REAR (RIGHT SIDE) (OPTIONAL)	30	85540474	1	PANEL, BOTTOM PLENUM
15	39918560	1	FOAM, CORNER REAR (RIGHT, BACK)	31	85540052	1	PANEL, FRONT
16	39897152	1	FOAM, FRONT PANEL (OPTIONAL)	32	85540300	1	PANEL, INTAKE
				33	85540706	1	PANEL, LEFT AND REAR
				34	85540649	1	PANEL, RIGHT



39920848
REV C

Item	CCN	Qty	Description	Item	CCN	Qty	Description
STANDARD ENCLOSURE (Cont..)				OUTDOOR & LOW AMBIENT OPTION			
35	85540722	1	PANEL, TOP STARTER BOX	55	85540763	1	PANEL, TOP REAR (OUTDOOR)
36	85540730	1	PANEL, TOP REAR	56	85540771	1	PANEL, TOP STARTER BOX (OUTDOOR)
37	85540698	1	PLENUM, TOP	OUTDOOR WATER COOLED OPTION			
38	39161070	1	PLUG, KNOCKOUT	51	85540656	1	PANEL, WATER COOLED RIGHT
39	85540599	1	WALL, LEFT PLENUM	52	39918107	1	FOAM, TOP FRONT (OUTDOOR)
40	85540565	1	WALL, PLENUM LEFT	53	39918115	1	FOAM, TOP REAR (RIGHT SIDE)
41	85540268	1	WALL, RIGHT PLENUM (OPTIONAL)	54	39918123	1	FOAM, RIGHT PANEL (OUTDOOR)
ODM WATER COOLED OPTION				55	85540763	1	PANEL, TOP REAR (OUTDOOR)
51	85540656	1	PANEL, WATER COOLED RIGHT	56	85540771	1	PANEL, TOP STARTER BOX (OUTDOOR)
52	39918107	1	FOAM, TOP FRONT (OUTDOOR)				
53	39918115	1	FOAM, TOP REAR (RIGHT SIDE)				
54	39918123	1	FOAM, RIGHT PANEL (OUTDOOR)				



39907944
REV 04

Item	CCN	Qty	Description	Item	CCN	Qty	Description
75DBA INTAKE							
1	39133145	22	SCREW, WASHER HEAD TAPPING .25 X .50 LONG ZINC PLATED	4	39906565	1	WALL, BATT LEFT
2	39589304	1	FOAM, 2 INCH 75DB INTAKE BATT	5	39906573	1	WALL, BATT RIGHT
3	39898390	7	BATT, INTAKE	6	39906581	1	WALL, BOTTOM INTAKE BATT
				7	39906599	1	ANGLE, BATT

SSR 50/60 HP (37/45 KW) SPARE PARTS

COMPRESSOR PART	PART NO.	QTY PER UNIT	LOCATION OR USE
Maintenance kit	39669411	0	Maintenance Kit with Ultra Coolant
Ultra Coolant-(5 Gal. Container)	39433735	1	Fill 6 Gallons
Air Filter Element	39708466	1	At Airend Inlet
Coolant Filter Element	39911615	1	On Coolant Filter
Separator Element	22089551	1	In Separator Tank
Thermostatic Control Valve	54702212	1	Between Cooler and Filter
Thermostatic Control Valve Element	22195820	1	In Thermostatic Control Valve
Blowdown Solenoid Valve (NEMA-1 & NEMA-4)	22125085	1	On Top of Tank (3SV)
Load Solenoid Valve (NEMA-1 & NEMA-4)	22228019	1	Rear of Starter Box (1SV)
Line/Sump Solenoid Valve (NEMA-1)	39583943	1	Rear of Starter Box (10SV)
Line/Sump Solenoid Valve (NEMA-4)	39497672	1	Rear of Starter Box (10SV)
Modulate Solenoid Valve (Optional) (NEMA-1)	39530852	1	Rear of Starter Box (2SV)
Modulate Solenoid Valve (Optional) (NEMA-4)	39497680	1	Rear of Starter Box (2SV)
Modulate Solenoid Valve (Optional) (NEMA-1)	39583943	1	Rear of Starter Box (6SV)
Modulate Solenoid Valve (Optional) (NEMA-4)	39497672	1	Rear of Starter Box (6SV)
Oil Stop Solenoid Valve 50 HP (NEMA 1 & NEMA-4)	22205462	1	In Coolant Filter Line (5SV)
Regulator Valve (XF & EP Models)	39905542	1	Rear of Starter Box
Regulator Valve (HP & XP Models)	39905682	1	Rear of Starter Box
Pressure Transducer	39853809	1	IN 10SV
Temperature Sensor	39586227	1	Airend Discharge
High Air Temperature Switch	39419668	1	In Airend (1ATS)
O-Ring	39404165	1	On HATS
Inlet Valve Assy.	42527366	1	Under Air Filter
Gasket, Inlet Valve	39476304	1	Under Inlet Valve
Indicator, Air Filter	22097208	1	On Inlet Valve
Cylinder, Pneumatic	22334155	1	At Inlet Valve
Rod End Bearing	39325154	1	On Cylinder
Minimum Pressure Valve	54750369/ 99289845	1	Tank Discharge Line
Breather Filter	39112362	1	On Gearcase Wall
Discharge Check Valve	39477674	1	Airend Disch. to Sep. Tank
Gasket, Discharge Check Valve	39326228	2	At Discharge Check Valve
Tank Relief Valve (50 HP)	39587993	1	On Separator Tank
Tank Relief Valve (60 HP)	39587951	1	On Separator Tank
Decal Set	39244355	1	
A/E Discharge Hose	23041221	1	Airend Discharge to Sep. Tank
Hose, Tank Scavenge	85557726	1	Scavenge Orifice to Airend
Hose, Blowdown to Inlet	85558906	1	Blowdown Valve to Inlet
Hose, Coolant Filter to Airend	85560456	1	Oil Filter to Airend
Hose, Aftercooler to Moisture Separator	85562536	1	Aftercooler to Moisture Separator

SSR 50/60 HP (37/45 KW) SPARE PARTS

COMPRESSOR PART	PART NO.	QTY PER UNIT	LOCATION OR USE
Hoses, Aircooled			
Hose, Coolant Cooler Aircooled	85560951	1	Thermal Valve to Coolant Cooler
Hose, Coolant Cooler Aircooled	85561017	1	Coolant Cooler to Thermal Valve
Hoses, Watercooled			
Hose, Water In	85561025	1	Water In to Aftercooler
Hose, Aftercooler to Coolant Cooler W/C	85561066	1	Aftercooler to Coolant Cooler
Hose, Water Out	85560993	1	Coolant Cooler to Water Out
Hose, Coolant Cooler Watercooled	85560993	1	Thermal Valve to Coolant Cooler
Hose, Coolant Cooler Watercooled	85561082	1	Coolant Cooler to Thermal Valve
Hose, Sep. Tank to Aftercooler W/C	85562536	1	Tank to Aftercooler
Hose, Sep. Tank to Aftercooler W/C	85563286	1	Tank to Aftercooler
Controller	39817655	1	In Control Box
Gasket, Controller	39495874	1	Intellisys to Control Box
Transformer, 230VA 60 Hz	39301981	1	In Control Box
Transformer, 330VA 60 Hz	39491519	1	In Control Box
Transformer, 330VA 50 Hz	39318142	1	In Control Box
Switch, Emergency Stop	39549167	1	In Control Box
Power On Light	39196225	1	In Control Box
Coil, for 60, 72 & 85 Amp Contactors	39251327	*	In 60, 72 or 85 Amp Contactor
Coil, for 180 Amp Contactor	22630784	*	In 180 Amp Contactor
Contact Kit, for 180 Amp Contactor	22630768	*	In 180 Amp Contactor
Coil, for 250 Amp Contactor	22630784	*	In 250 Amp Contactor
Contact Kit, for 250 Amp Contactor	22630768	*	In 250 Amp Contactor
Overload Relay	23053770	*	For 60/72/85 Amp Contactors
Overload Relay	22630974	*	For 180 Amp Contactor
Overload Relay	22630974	*	For 250 Amp Contactor
Mechanical/Electrical Interlock	39251186	*	For 60/72/85 So Starters
Mechanical/Electrical Interlock	22665855	*	For 180/250 Amp So Starters
Contact, Auxiliary 4 N.O Contacts	39251129	*	For 60/72/85 Amp Contactors
Contact, Auxiliary 1 N.O. / 1 N.C. Contacts	39251137	*	For 60/72/85 Amp Contactors
Contact, Auxiliary 2 N.O. / 2 N.C. Contacts	39251145	*	For 60/72/85 Amp Contactors
Contact, Auxiliary 2 N.O. Contacts	22264857	*	For 180/250 Amp Contactors
Contact, Auxiliary 1 N.O. / 1 N.C. Contacts	22665830	*	For 180/250 Amp Contactors
Fan Motor Starter 4 A	22395792	*	Fan Motor Circuit
Fan Motor Starter 6.3 A	22395800	*	Fan Motor Circuit
Fan Motor Starter 10 A	22395818	*	Fan Motor Circuit
Fan Motor Starter 16 A	22630933	*	Fan Motor Circuit
Fan Motor Starter 20 A	22630941	*	Fan Motor Circuit
Auxiliary contact for Fan Motor Starter 1 N.O.	22630925	1	In Fan Motor Starter

* Refer to Starter Assembly Section

SSR 75/100 HP (55-75 KW) SPARE PARTS

COMPRESSOR PART	PART NO.	QTY PER UNIT	LOCATION OR USE
Maintenance kit	39669437	0	Maintenance Kit with Ultra Coolant
Ultra Coolant-(5 Gal. Container)	39433735	2	Fill 9 Gallons
Air Filter Element	39708466	2	At Airend Inlet
Coolant Filter Element	39911631	1	On Coolant Filter
Separator Element	54601513	1	In Separator Tank
Thermostatic Control Valve	54702212	1	Between Cooler and Filter
Thermostatic Control Valve Element	22195820	1	In Thermostatic Control Valve
Blowdown Solenoid Valve (NEMA-1 & NEMA-4)	22124055	1	On Top of Tank (3SV)
Load Solenoid Valve (NEMA-1 & NEMA-4)	22228019	1	Rear of Starter Box (1SV)
Line/Sump Solenoid Valve (NEMA-1)	39583943	1	Rear of Starter Box (10SV)
Line/Sump Solenoid Valve (NEMA-4)	39497672	1	Rear of Starter Box (10SV)
Modulate Solenoid Valve (Optional) (NEMA-1)	39530852	1	Rear of Starter Box (2SV)
Modulate Solenoid Valve (Optional) (NEMA-4)	39497680	1	Rear of Starter Box (2SV)
Modulate Solenoid Valve (Optional NEMA-1)	39583943	1	Rear of Starter Box (6SV)
Modulate Solenoid Valve (Optional NEMA-4)	39497672	1	Rear of Starter Box (6SV)
Oil Stop Solenoid Valve (NEMA 1 & NEMA-4)	22205462	1	In Coolant Filter Line (5SV)
Regulator Valve (XF & EP Models)	39905542	1	Rear of Starter Box
Regulator Valve (HP & XP Models)	39905682	1	Rear of Starter Box
Pressure Transducer	39853809	1	In 10SV
Temperature Sensor	39586227	1	Airend Discharge
High Air Temperature Switch	39419668	1	In Airend (1ATS)
O-Ring	39404165	1	On HATS
Inlet Valve Assy.	42527366	1	Under Air Filter
Gasket, Inlet Valve	39476304	1	Under Inlet Valve
Indicator, Air Filter	22097208	1	On Inlet Valve
Cylinder, Pneumatic	22334155	1	At Inlet Valve
Rod End Bearing	39325154	1	On Cylinder
Minimum Pressure Valve, 1.5, 75 HP	54750369/ 99289845	1	Tank Discharge Line
Minimum Pressure Valve, 2.0, 100HP	54750377/ 99289852	1	Tank Discharge Line
Breather Filter	39112362	1	On Gearcase Wall
Discharge Check Valve	39477674	1	Airend Disch. to Sep. Tank
Gasket, Discharge Check Valve	39326228	2	At Discharge Check Valve
Tank Relief Valve	39588116	1	On Separator Tank
Decal Set	39244355	1	
A/E Discharge Hose	23041239	1	Airend Discharge to Sep. Tank
Hose, Tank Scavenge	85557726	1	Scavenge Orifice to Airend
Hose, Blowdown to Inlet	85558872	1	Blowdown Valve to Inlet
Hose, Coolant Filter to Airend	85561769	1	Oil Filter to Airend
Hose, Aftercooler to Moisture Separator 75 HP	85562536	1	Aftercooler to Moisture Separator
Hose, Aftercooler to Moisture Separator 100 HP	85563245	1	Aftercooler to Moisture Separator
Hoses, Aircooled			
Hose, Coolent Cooler Aircooled	85560993	1	Thermal valve to coolant cooler
Hose, Coolent Cooler Aircooled	85560993	1	Colant cooler to Thermal valve

SSR 75/100 HP (55-75 KW) SPARE PARTS

COMPRESSOR PART	PART NO.	QTY PER UNIT	LOCATION OR USE
Hoses, Watercooled			
Hose, Water In	85561025	1	Water In to Aftercooler
Hose, Aftercooler to Coolant Cooler W/C	85561066	1	Aftercooler to Coolant Cooler
Hose, Water Out	85561025	1	Coolant Cooler to Water Out
Hose, Coolant Cooler Watercooled	85561025	1	Thermal Valve to Coolant Cooler
Hose, Coolant Cooler Watercooled	85561157	1	Coolant Cooler to Thermal Valve
Hose, Sep. Tank to Aftercooler Watercooled	85562536	1	Tank to Aftercooler
Controller	39817655	1	In Control Box
Gasket, Controller	39495874	1	Intellisys to Control Box
Transformer, 230VA 60 Hz	39301981	1	In Control Box
Transformer, 330VA 60 Hz	39491519	1	In Control Box
Transformer, 230VA 50 Hz	39301134	1	In Control Box
Transformer, 330VA 50 Hz	39318142	1	In Control Box
Switch, Emergency Stop	39549167	1	In Control Box
Power On Light	39196225	1	In Control Box
Coil, for 37 Amp Contactor	39251319	*	In 37 Amp Contactor
Coil, for 43 Amp Contactor	39251327	*	In 43 Amp Contactor
Coil, for 60, 72 & 85 Amp Contactors	39251327	*	In 60, 72 or 85 Amp Contactor
Coil, for 180 Amp Contactor	22630784	*	In 180 Amp Contactor
Contact Kit, for 180 Amp Contactor	22630768	*	In 180 Amp Contactor
Coil, for 250 Amp Contactor	22630784	*	In 250 Amp Contactor
Contact Kit, for 250 Amp Contactor	22630768	*	In 250 Amp Contactor
Overload Relay	23053770	*	For 60/72/85 Amp Contactors
Overload Relay	22630974	*	For 180 Amp Contactor
Overload Relay	22630974	*	For 250 Amp Contactor
Mechanical/Electrical Interlock	39251186	*	For 60/72/85 Amp Contactors
Mechanical/Electrical Interlock	22665855	*	For 180/250 Amp Contactors
Contact, Auxiliary 4 N.O Contacts	39251129	*	For 60/72/85 Amp Contactors
Contact, Auxiliary 1 N.O. / 1 N.C. Contacts	39251137	*	For 60/72/85 Amp Contactors
Contact, Auxiliary 2 N.O. / 2 N.C. Contacts	39251145	*	For 60/72/85 Amp Contactors
Contact, Auxiliary 2 N.O. Contacts	22264857	*	For 180/250 Amp Contactors
Contact, Auxiliary 1 N.O. / 1 N.C. Contacts	22665830	*	For 180/250 Amp Contactors
Circuit Breaker/Overload 4 A	22395792	*	Fan Motor Circuit
Circuit Breaker/Overload 6.3 A	22395800	*	Fan Motor Circuit
Circuit Breaker/Overload 10 A	22395818	*	Fan Motor Circuit
Circuit Breaker/Overload 16 A	22630933	*	Fan Motor Circuit
Circuit Breaker/Overload 20 A	22630941	*	Fan Motor Circuit
Auxiliary Sw. for Circuit Bkr/Overload 1 N.O.	22630925	1	Fan Motor Starter

